

The Roadmap of Need is a whole child needs assessment for North Carolina youth, produced annually by the Public School Forum of North Carolina's Center for Afterschool Programs (NC CAP).

The Roadmap includes **20 indicators of wellness** across four domains: **health, youth behavior and safety, education, and economic development.** We believe these four domains capture the interconnected social, emotional, and academic elements that are necessary for a child to succeed, both inside and outside of the classroom. Taking the approach of a whole child needs assessment is critical to understanding what is necessary for each child to have in order to thrive in school and in life.

Over the past nine years, the Roadmap has been a key resource for communicating with policymakers, funders, and the public about the importance of expanded learning programs and targeting areas where needs exist for increased investment. School administrators, afterschool providers,

nonprofits, community leaders, and parent advocates often use the Roadmap to demonstrate the needs that exist in their communities. Public education advocates have brought Roadmap data to the attention of school board members, county commissioners, and members of the General Assembly in order to inform their efforts to create state and local policies that address significant community needs.

Our publication's examination of 20 indicators represent data that demonstrate various needs across North Carolina, with each indicator being used to identify where young people are most at risk of not succeeding. In addition to county-specific data on each indicator, the Roadmap provides rankings for each indicator and domain, as well as an overall ranking of all 100 counties that takes into account the data on all 20 indicators.

A note on our methodology: all indicators are weighted equally in the calculations, but in reality, some of these indicators may have a stronger influence on youth success than others. In order to come up with these indicators, we consulted with experts in each of the four domains, using their input

to guide decisions about which data to include in the Roadmap. Additionally, it is important to recognize that other indicators could have been used. Had different indicators been chosen, such as using the number of students that qualify for free and reduced priced lunch instead of median household income, the results may have varied slightly; however, the counties at the top and the bottom of the rankings would likely have remained the same.

The Public School Forum and NC CAP will continue to advocate for public schools, expanded learning opportunities, and healthy, economically vital North Carolina communities. However, we strongly believe that citizens and community organizations are in the best position to advocate for their schools and communities. We hope that the Roadmap will continue to serve as a resource for policymakers, program providers, business and community leaders, grant writers, researchers, and educators. It is up to all of us, as North Carolina citizens, to use the data provided by the Roadmap to work thoughtfully and collaboratively to target resources most effectively to ensure that all North Carolina youth have the opportunity to succeed.



INDICATOR SOURCES

TEEN PREGNANCY

North Carolina State Center for Health Statistics' 2019 County Data Book. Available at <https://schs.dph.ncdhhs.gov/data/databook/>.

NUMBER OF PHYSICIANS

North Carolina Health Professions Data System, Program on Health Workforce Research and Policy, Cecil G. Sheps Center for Health Services Research, University of North Carolina at Chapel Hill. Available at <https://nchealthworkforce.unc.edu/supply/>.

CHILD FATALITY

North Carolina State Center for Health Statistics. Available at https://schs.dph.ncdhhs.gov/data/vital/cd/2017/ChildDeathRatesbyCounty2013_2017_v2.pdf. Population data from the NC Office of State Budget and Management. Available at <https://www.osbm.nc.gov/demog/county-projections>.

CHILD FOOD INSECURITY

Feeding America's Map the Meal Gap 2018: Child Food Insecurity in North Carolina by County in 2016. Available at https://www.feedingamerica.org/sites/default/files/research/map-the-meal-gap/2016/child/NC_AllCounties_CDs_CFI_2016.pdf.

CHILD OBESITY

WIC: Local Agency Resources, Nutrition Services Branch, Division of Public Health, North Carolina Department of Health and Human Services. Available at <https://www.nutritionnc.com/wic/pdf/CY-2017-BMI-StatusForWIC-Children-2-4-Years.pdf>.

JUVENILE DELINQUENCY

NC Department of Public Safety, Division of Juvenile Justice's 2017 County Data Book. Available at <https://www.ncdps.gov/documents/2017-county-databook>.

SHORT-TERM SUSPENSIONS

NC Department of Public Instruction's Consolidated Data Report 2016-2017. Available at <http://www.ncpublicschools.org/research/discipline/reports/>.

JUVENILE DETENTION ADMISSIONS

NC Department of Public Safety, Division of Juvenile Justice's 2017 County Data Book. Available at <https://www.ncdps.gov/documents/2017-county-databook>.

CHILDREN IN DSS CUSTODY

Special Data Request to John Ragosta, Child Welfare Data Team Manager, North Carolina Department of Health and Human Services. Population data from the NC Office of State Budget and Management. Available at <https://www.osbm.nc.gov/demog/county-projections>.

CHILD ABUSE AND NEGLECT

Special Data Request to John Ragosta, Child Welfare Data Team Manager, North Carolina Department of Health and Human Services. Population data from the NC Office of State Budget and Management. Available at <https://www.osbm.nc.gov/demog/county-projections>.

GRADUATION RATE

NC Department of Public Instruction's 2016-17 State, District, and School Level Summary Data. Available at <http://www.ncpublicschools.org/accountability/reporting/>.

3RD GRADE READING PROFICIENCY

NC Department of Public Instruction's 2016-17 State, District, and School Level Summary Data. Available at <http://www.ncpublicschools.org/accountability/reporting/>.

NC MATH I PROFICIENCY

NC Department of Public Instruction's 2016-17 State, District, and School Level Summary Data. Available at <http://www.ncpublicschools.org/accountability/reporting/>.

ACT COMPOSITE SCORE

NC Department of Public Instruction's 2016-17 Results of Grade 11 Statewide Administration of the ACT. Available at <http://www.dpi.state.nc.us/accountability/act/>.

MET OR EXCEEDED GROWTH

NC Department of Public Instruction's 2016-17 School Report Cards. Available at <https://ncreportcards.ondemand.sas.com/src/>.

MEDIAN HOUSEHOLD INCOME

U.S. Census Bureau, Small Area Income and Poverty Estimates (SAIPE) Program's 2017 Estimates. Available at https://www.census.gov/data-tools/demo/saipe/saipe.html?s_appName=saipe&map_yearSelector=2017&map_geoSelector=aa_c.

CHILD POVERTY

U.S. Census Bureau, Small Area Income and Poverty Estimates (SAIPE) Program's 2017 Estimates. Available at https://www.census.gov/data-tools/demo/saipe/saipe.html?s_appName=saipe&map_yearSelector=2017&map_geoSelector=aa_c.

UNEMPLOYMENT RATE

US Bureau of Labor Statistics' Local Area Unemployment Statistics (LAUS) program. Available at <http://www.bls.gov/lau/#tables>.

ADULTS WITH BACHELOR'S DEGREES

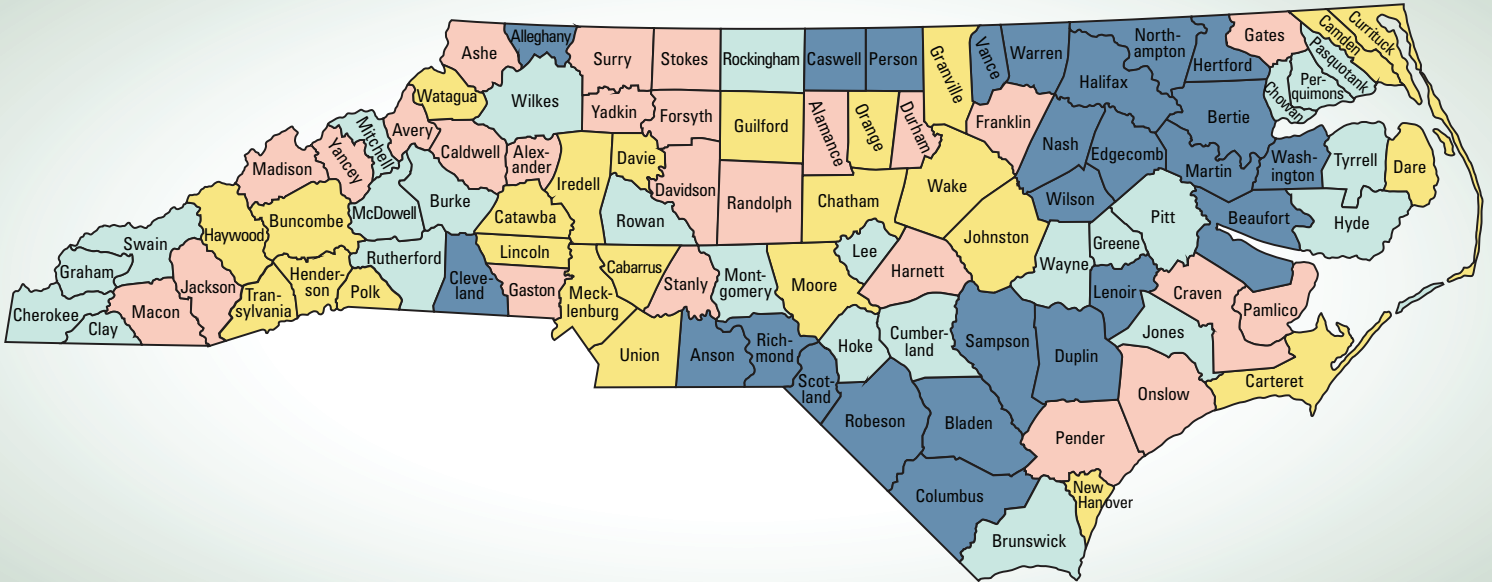
American Community Survey 5 year estimates (2013-2017), Table S1501. Available at https://factfinder.census.gov/faces/tableservices/jsf/pages/productview.xhtml?pid=ACS_17_5YR_S1501&prodType=table.

SINGLE PARENT HOUSEHOLDS

Robert Wood Johnson Foundation's 2018 County Health Rankings. Available at <http://www.countyhealthrankings.org/rankings/data/nc>.



TWO NORTH CAROLINAS



- QUARTILE 1** - Counties Ranked 1-25
- QUARTILE 2** - Counties Ranked 26-50
- QUARTILE 3** - Counties Ranked 51-75
- QUARTILE 4** - Counties Ranked 76-100

Looking at the data illustrated by the map above, a troubling trend continues—the fact that our state is now divided into “two North Carolinas.” One North Carolina we see borne out in the data is populated by young people living in largely urban areas that are attractive to industries and job growth, providing quality educational experiences both in and out of school, and promoting healthy activities. The other North Carolina we are seeing is populated by young people living in communities in a state of economic decline that have struggling schools, few out-of-school opportunities, and limited options for healthy activities. At first glance, the Roadmap points to counties in eastern North Carolina as those most at risk. However, the nature of county-wide indicators often masks the variation occurring within counties, particularly our most populous urban counties where single neighborhoods that would fare well on the Roadmap indicators exist in close proximity to neighborhoods with many young people in need.



HEALTH

HEALTH RANKINGS

	OVERALL HEALTH RANKING	TEEN PREGNANCY RANKING	NUMBER OF PHYSICIANS RANKING	CHILD FATALITY RANKING	CHILD FOOD INSECURITY RANKING	CHILD OBESITY RANKING	AVERAGE OF HEALTH RANKINGS
ORANGE COUNTY	1	2	1	12	1	20	7.2
BUNCOMBE COUNTY	2	18	5	14	12	17	13.2
WAKE COUNTY	3	5	13	21	2	32	14.6
MECKLENBURG COUNTY	4	31	8	27	5	23	18.8
HENDERSON COUNTY	5	37	15	17	9	25	20.6
NEW HANOVER COUNTY	6	6	7	51	17	23	20.8
CABARRUS COUNTY	7	19	16	18	4	52	21.8
DURHAM COUNTY	8	40	2	32	12	27	22.6
DARE COUNTY	9	21	24	9	8	60	24.4
GRANVILLE COUNTY	10	38	21	25	14	40	27.6
STOKES COUNTY	11	10	80	1	32	18	28.2
POLK COUNTY	12	35	45	13	46	6	29
MOORE COUNTY	13	23	6	56	26	37	29.6
PASQUOTANK COUNTY	14	30	9	10	50	52	30.2
CARTERET COUNTY	15	12	39	23	22	57	30.6
IREDELL COUNTY	16	21	25	71	10	34	32.2
GUILFORD COUNTY	17	15	12	73	26	36	32.4
UNION COUNTY	17	4	63	19	2	74	32.4
CAMDEN COUNTY	19	3	100	35	16	12	33.2
JACKSON COUNTY	20	7	20	20	78	42	33.4
HAYWOOD COUNTY	21	43	33	8	57	33	34.8
PITT COUNTY	22	11	4	77	42	43	35.4
FORSYTH COUNTY	23	25	3	61	39	50	35.6
GASTON COUNTY	24	49	28	45	42	16	36
ALAMANCE COUNTY	25	24	31	40	33	55	36.6
TRANSYLVANIA COUNTY	26	16	36	63	63	14	38.4
DAVIE COUNTY	27	17	68	15	20	75	39
LINCOLN COUNTY	28	20	59	33	18	66	39.2
CATAWBA COUNTY	29	31	11	37	24	99	40.4
CURRITUCK COUNTY	29	8	89	68	6	31	40.4
BEAUFORT COUNTY	31	46	61	65	22	11	41
ASHE COUNTY	32	42	53	22	60	29	41.2
MACON COUNTY	32	58	19	53	75	1	41.2
JOHNSTON COUNTY	34	31	69	34	10	64	41.6
CHATHAM COUNTY	35	9	78	28	6	88	41.8
ONSLow COUNTY	36	97	62	36	18	3	43.2
CUMBERLAND COUNTY	37	79	27	69	45	6	45.2
DAVIDSON COUNTY	38	44	76	24	29	57	46
STANLY COUNTY	38	46	49	52	40	43	46
AVERY COUNTY	40	14	44	93	24	56	46.2
CRAVEN COUNTY	40	78	10	57	37	49	46.2
MITCHELL COUNTY	42	45	34	67	65	21	46.4
ROWAN COUNTY	43	66	48	47	51	21	46.6
WATAUGA COUNTY	44	1	16	94	35	91	47.4
MCDOWELL COUNTY	45	53	67	48	65	5	47.6
HARNETT COUNTY	46	36	73	74	28	29	48
CLEVELAND COUNTY	47	63	35	62	69	18	49.4
PAMLICO COUNTY	48	34	75	85	55	2	50.2
SURRY COUNTY	48	48	32	44	31	96	50.2
BRUNSWICK COUNTY	50	65	50	16	69	52	50.4

HEALTH RANKINGS

	OVERALL HEALTH RANKING	TEEN PREGNANCY RANKING	NUMBER OF PHYSICIANS RANKING	CHILD FATALITY RANKING	CHILD FOOD INSECURITY RANKING	CHILD OBESITY RANKING	AVERAGE OF HEALTH RANKINGS
LENOIR COUNTY	50	75	30	54	78	15	50.4
ROCKINGHAM COUNTY	52	54	52	29	57	64	51.2
YANCEY COUNTY	52	67	74	1	63	51	51.2
JONES COUNTY	54	41	43	1	92	80	51.4
TYRRELL COUNTY	55	*	100	1	96	9	51.5
CHOWAN COUNTY	56	61	22	1	87	98	53.8
HERTFORD COUNTY	57	39	23	55	83	70	54
YADKIN COUNTY	57	52	86	11	46	75	54
BURKE COUNTY	59	60	14	89	65	43	54.2
HOKE COUNTY	59	59	82	60	57	13	54.2
WAYNE COUNTY	61	83	41	39	72	38	54.6
RUTHERFORD COUNTY	62	57	58	41	75	47	55.6
NASH COUNTY	63	61	26	81	42	80	58
BERTIE COUNTY	64	72	84	46	85	4	58.2
CALDWELL COUNTY	64	70	57	59	35	70	58.2
MADISON COUNTY	66	12	70	86	40	85	58.6
LEE COUNTY	67	77	40	91	29	57	58.8
CASWELL COUNTY	68	25	92	99	72	8	59.2
SWAIN COUNTY	69	98	18	79	95	9	59.8
PERQUIMANS COUNTY	70	69	93	1	71	66	60
CHEROKEE COUNTY	71	54	51	97	72	27	60.2
WILKES COUNTY	71	75	54	26	55	91	60.2
PENDER COUNTY	73	28	88	88	33	66	60.6
RANDOLPH COUNTY	74	56	71	75	37	66	61
ALLEGHANY COUNTY	75	85	66	42	77	38	61.6
FRANKLIN COUNTY	76	27	97	70	15	100	61.8
SAMPSON COUNTY	77	94	56	31	61	72	62.8
ALEXANDER COUNTY	78	50	87	58	48	75	63.6
GREENE COUNTY	79	81	83	30	54	79	65.4
WILSON COUNTY	79	79	38	78	89	43	65.4
GATES COUNTY	81	29	100	100	20	87	67.2
WARREN COUNTY	81	64	94	1	84	93	67.2
VANCE COUNTY	83	92	37	82	87	47	69
CLAY COUNTY	84	51	79	87	51	82	70
SCOTLAND COUNTY	84	95	29	64	100	62	70
MARTIN COUNTY	86	68	54	76	65	95	71.6
RICHMOND COUNTY	87	86	65	83	91	34	71.8
MONTGOMERY COUNTY	88	91	91	37	53	90	72.4
EDGECOMBE COUNTY	89	93	60	90	96	25	72.8
HALIFAX COUNTY	90	87	42	65	89	82	73
ANSON COUNTY	91	82	81	72	61	73	73.8
GRAHAM COUNTY	92	73	84	49	78	86	74
COLUMBUS COUNTY	93	89	46	80	78	84	75.4
DUPLIN COUNTY	94	73	77	50	82	97	75.8
PERSON COUNTY	95	84	63	96	48	89	76
ROBESON COUNTY	96	88	46	95	98	60	77.4
NORTHAMPTON COUNTY	97	90	95	43	99	78	81
BLADEN COUNTY	98	71	72	84	94	93	82.8
WASHINGTON COUNTY	99	96	90	98	93	40	83.4
HYDE COUNTY	100	*	96	92	86	62	84

HOW THE CATEGORY RANKINGS WERE CALCULATED

In order to calculate the rankings, each county was given a rank of 1-100, either from lowest to highest or highest to lowest, depending on each indicator. For example, teen pregnancy rates were ordered lowest to highest, while physicians per 10,000 population numbers were ordered highest to lowest. Once we had rankings for all the indicators in the category, the indicator rankings were averaged for each county, giving an average of all health rankings. The counties were then ranked by this average, providing an Overall Health Ranking. This procedure was repeated for the categories of Youth Behavior & Safety, Education, and Economic Development.

HEALTH DATA

	TEEN PREGNANCY RATE PER 1,000	NUMBER OF PHYSICIANS PER 10,000	CHILD FATALITY RATE PER 10,000	CHILD FOOD INSECURITY PERCENTAGE	CHILD OBESITY PERCENTAGE
ALAMANCE COUNTY	27.90	17.32	4.99	21.40%	17.10%
ALEXANDER COUNTY	34.20	4.16	6.49	22.30%	18.50%
ALLEGHANY COUNTY	47.00	8.90	5.02	24.30%	15.90%
ANSON COUNTY	43.10	5.07	7.67	23.30%	18.20%
ASHE COUNTY	31.50	10.65	4.04	23.20%	15.00%
AVERY COUNTY	24.30	13.28	10.85	20.90%	17.20%
BEAUFORT COUNTY	32.70	9.25	7.20	20.70%	12.70%
BERTIE COUNTY	41.00	4.53	5.29	25.20%	11.20%
BLADEN COUNTY	39.80	7.27	9.73	27.50%	20.70%
BRUNSWICK COUNTY	37.80	11.01	3.60	23.60%	17.00%
BUNCOMBE COUNTY	26.20	43.02	3.01	19.60%	13.80%
BURKE COUNTY	37.20	23.93	10.35	23.50%	16.40%
CABARRUS COUNTY	26.50	22.48	3.90	17.80%	17.00%
CALDWELL COUNTY	39.30	9.48	6.58	21.50%	18.00%
CAMDEN COUNTY	16.20	0.00	4.75	20.10%	12.90%
CARTERET COUNTY	23.80	15.24	4.10	20.70%	17.30%
CASWELL COUNTY	28.20	2.53	16.56	24.10%	12.10%
CATAWBA COUNTY	29.90	25.49	4.88	20.90%	30.10%
CHATHAM COUNTY	22.50	5.48	4.29	18.70%	19.90%
CHEROKEE COUNTY	34.80	10.95	12.08	24.10%	14.90%
CHOWAN COUNTY	37.50	20.99	0.00	25.80%	26.50%
CLAY COUNTY	34.50	5.22	10.06	22.60%	19.30%
CLEVELAND COUNTY	37.60	16.84	7.10	23.60%	13.90%
COLUMBUS COUNTY	49.40	13.00	9.10	24.60%	19.40%
GRAVEN COUNTY	42.30	25.84	6.46	21.60%	16.60%
CUMBERLAND COUNTY	42.40	18.20	7.30	22.10%	11.50%
CURRITUCK COUNTY	21.60	3.76	7.28	18.70%	15.20%
DARE COUNTY	27.10	19.30	1.45	18.90%	17.40%
DAVIDSON COUNTY	31.80	6.64	4.16	21.20%	17.30%
DAVIE COUNTY	26.00	8.19	3.49	20.50%	18.50%
DUPLIN COUNTY	41.30	6.39	5.58	24.80%	22.00%
DURHAM COUNTY	31.10	75.38	4.58	19.60%	14.90%
EDGECOMBE COUNTY	52.20	9.27	10.57	27.90%	14.70%
FORSYTH COUNTY	28.20	54.88	6.99	21.70%	16.80%
FRANKLIN COUNTY	28.40	1.20	7.48	20.00%	37.40%
GASTON COUNTY	33.50	18.03	5.25	21.90%	13.70%
GATES COUNTY	28.90	0.00	16.90	20.50%	19.80%
GRAHAM COUNTY	41.30	4.53	5.54	24.60%	19.70%
GRANVILLE COUNTY	30.90	21.01	4.17	19.80%	16.10%
GREENE COUNTY	42.60	4.65	4.41	22.90%	19.10%
GUILFORD COUNTY	25.70	24.56	7.74	21.00%	15.70%
HALIFAX COUNTY	48.40	14.09	7.20	26.80%	19.30%
HARNETT COUNTY	30.30	7.18	8.11	21.10%	15.00%
HAYWOOD COUNTY	31.60	17.18	0.88	23.10%	15.50%
HENDERSON COUNTY	30.80	23.33	3.62	19.00%	14.70%
HERTFORD COUNTY	31.00	20.04	6.37	25.00%	18.00%
HOKE COUNTY	36.90	4.87	6.65	23.10%	13.00%
HYDE COUNTY	*	1.77	10.74	25.30%	17.50%
IREDELL COUNTY	27.10	19.26	7.63	19.40%	15.60%
JACKSON COUNTY	21.00	21.11	4.01	24.60%	16.20%

HEALTH DATA

	TEEN PREGNANCY RATE PER 1,000	NUMBER OF PHYSICIANS PER 10,000	CHILD FATALITY RATE PER 10,000	CHILD FOOD INSECURITY PERCENTAGE	CHILD OBESITY PERCENTAGE
JOHNSTON COUNTY	29.90	7.70	4.71	19.40%	17.70%
JONES COUNTY	31.20	13.52	0.00	27.20%	19.20%
LEE COUNTY	42.20	14.83	10.73	21.20%	17.30%
LENOIR COUNTY	42.00	17.40	6.30	24.60%	13.40%
LINCOLN COUNTY	26.60	9.37	4.63	20.40%	17.90%
MACON COUNTY	36.80	21.18	6.10	24.20%	6.80%
MADISON COUNTY	23.80	7.64	9.98	21.80%	19.60%
MARTIN COUNTY	38.80	10.21	8.45	23.50%	20.80%
MCDOWELL COUNTY	34.70	8.75	5.40	23.50%	11.30%
MECKLENBURG COUNTY	29.90	31.37	4.26	18.20%	14.50%
MITCHELL COUNTY	32.10	17.06	7.24	23.50%	14.40%
MONTGOMERY COUNTY	50.80	2.87	4.88	22.70%	20.10%
MOORE COUNTY	27.30	34.43	6.44	21.00%	15.80%
NASH COUNTY	37.50	18.23	9.32	21.90%	19.20%
NEW HANOVER COUNTY	20.20	32.96	5.58	20.30%	14.50%
NORTHAMPTON COUNTY	50.10	1.93	5.18	30.20%	18.90%
ONSLow COUNTY	59.30	9.15	4.81	20.40%	11.00%
ORANGE COUNTY	8.00	118.78	2.65	16.10%	14.10%
PAMLICO COUNTY	30.10	6.78	9.83	23.00%	9.80%
PASQUOTANK COUNTY	29.30	26.36	2.18	22.50%	17.00%
PENDER COUNTY	28.70	3.77	10.26	21.40%	17.90%
PERQUIMANS COUNTY	39.20	2.21	0.00	23.70%	17.90%
PERSON COUNTY	46.40	9.03	12.02	22.30%	20.00%
PITT COUNTY	23.30	49.43	8.48	21.90%	16.40%
POLK COUNTY	30.20	13.24	2.90	22.20%	11.50%
RANDOLPH COUNTY	35.40	7.33	8.12	21.60%	17.90%
RICHMOND COUNTY	47.70	8.91	9.69	27.00%	15.60%
ROBESON COUNTY	49.00	12.50	11.82	28.70%	17.40%
ROCKINGHAM COUNTY	34.80	10.68	4.32	23.10%	17.70%
ROWAN COUNTY	38.00	12.40	5.36	22.60%	14.40%
RUTHERFORD COUNTY	36.30	9.44	5.01	24.20%	16.50%
SAMPSON COUNTY	52.30	9.82	4.46	23.30%	18.10%
SCOTLAND COUNTY	54.10	17.93	7.19	30.60%	17.50%
STANLY COUNTY	32.70	11.85	6.04	21.80%	16.40%
STOKES COUNTY	22.70	5.14	0.00	21.30%	13.90%
SURRY COUNTY	32.80	17.30	5.20	21.20%	21.40%
SWAIN COUNTY	65.10	22.00	8.78	27.60%	12.50%
TRANSYLVANIA COUNTY	25.90	16.25	7.14	23.40%	13.30%
TYRRELL COUNTY	*	0.00	0.00	27.90%	12.50%
UNION COUNTY	18.00	9.03	3.97	16.50%	18.40%
VANCE COUNTY	51.40	16.05	9.37	25.80%	16.50%
WAKE COUNTY	19.40	24.39	4.02	16.50%	15.30%
WARREN COUNTY	37.70	1.99	0.00	25.10%	20.70%
WASHINGTON COUNTY	55.60	3.24	15.16	27.40%	16.10%
WATAUGA COUNTY	6.50	22.25	11.67	21.50%	20.20%
WAYNE COUNTY	43.30	14.73	4.93	24.10%	15.90%
WILKES COUNTY	42.00	10.21	4.22	23.00%	20.20%
WILSON COUNTY	42.40	15.60	8.53	26.80%	16.40%
YADKIN COUNTY	34.60	4.51	2.52	22.20%	18.50%
YANCEY COUNTY	38.10	7.14	0.00	23.40%	16.90%

HEALTH INDICATORS

TEEN PREGNANCY
The teen pregnancy rate represents the 2013-2017 five year average of the number of pregnancies per 1,000 females ages 15-19.

NUMBER OF PHYSICIANS
The number of physicians represents the number active, licensed physicians with the North Carolina Medical Board per 10,000 total population in 2017.

CHILD FATALITY
The child fatality rate is the number of child deaths per 10,000 children under age 18 in 2017. This number includes infant mortalities.

CHILD FOOD INSECURITY
The food insecurity rate reflects the percentage of children under age 18 living in food insecure households in 2016. These numbers reflect the USDA's definition for household food insecurity – the household-level economic and social condition of limited or uncertain access to adequate food.

CHILD OBESITY
The child obesity percentage represents the percentage of children ages 2-4 considered obese participating in the Special Supplemental Nutrition Program for Women, Infants and Children (WIC) in 2017.

NORTH CAROLINA DATA

Teen Pregnancy Rate per 1,000: 30.50
 Number of Physicians per 10,000: 23.78
 Child Fatality Rate per 10,000: 5.68
 Child Food Insecurity Percentage: 20.90%
 Child Obesity Percentage: 16.10%



YOUTH BEHAVIOR AND SAFETY

YOUTH BEHAVIOR & SAFETY (YBS) RANKINGS

	OVERALL YOUTH BEHAVIOR & SAFETY RANKING	JUVENILE DELINQUENCY RANKING	SHORT-TERM SUSPENSION RANKING	JUVENILE DETENTION ADMISSION RANKING	CHILDREN IN DSS CUSTODY RANKING	CHILD ABUSE & NEGLECT RANKING	AVERAGE OF YBS RANKINGS
CAMDEN COUNTY	1	5	6	1	30	9	10.2
GATES COUNTY	2	16	46	1	1	1	13
ORANGE COUNTY	3	3	3	18	7	55	17.2
CHATHAM COUNTY	4	8	19	14	20	30	18.2
MOORE COUNTY	5	23	35	14	18	14	20.8
CABARRUS COUNTY	6	6	44	30	12	13	21
WAKE COUNTY	7	10	24	42	19	16	22.2
JOHNSTON COUNTY	8	18	41	16	21	23	23.8
HYDE COUNTY	9	1	79	1	47	4	26.4
RANDOLPH COUNTY	10	41	11	24	37	21	26.8
GREENE COUNTY	11	46	48	1	50	6	30.2
WATAUGA COUNTY	12	24	1	20	72	39	31.2
UNION COUNTY	13	71	34	37	8	7	31.4
DARE COUNTY	14	93	14	21	6	32	33.2
GRANVILLE COUNTY	15	4	54	35	31	49	34.6
ROWAN COUNTY	16	7	72	33	10	53	35
HERTFORD COUNTY	17	39	89	41	3	5	35.4
TRANSYLVANIA COUNTY	18	9	12	26	77	54	35.6
HOKE COUNTY	19	29	63	31	34	22	35.8
HENDERSON COUNTY	20	31	23	16	59	51	36
BLADEN COUNTY	21	2	61	12	59	50	36.8
CHOWAN COUNTY	21	90	66	24	2	2	36.8
SWAIN COUNTY	21	12	16	1	98	57	36.8
CURRITUCK COUNTY	24	42	36	26	39	42	37
HARNETT COUNTY	25	48	59	29	26	27	37.8
MACON COUNTY	26	60	5	13	42	72	38.4
DURHAM COUNTY	27	20	64	74	33	8	39.8
CLAY COUNTY	28	11	2	1	90	97	40.2
BERTIE COUNTY	29	54	76	36	16	24	41.2
CATAWBA COUNTY	30	35	32	67	35	40	41.8
GRAHAM COUNTY	31	22	8	1	92	93	43.2
JACKSON COUNTY	32	74	9	1	70	65	43.8
WARREN COUNTY	33	17	96	60	27	20	44
DUPLIN COUNTY	34	37	68	43	32	43	44.6
PERQUIMANS COUNTY	35	85	47	65	14	15	45.2
FRANKLIN COUNTY	36	14	69	19	62	67	46.2
BUNCOMBE COUNTY	37	21	51	23	65	73	46.6
CARTERET COUNTY	37	15	43	51	66	58	46.6
POLK COUNTY	39	27	17	62	85	43	46.8
WAYNE COUNTY	39	26	67	63	41	37	46.8
ALAMANCE COUNTY	41	63	52	71	22	31	47.8
FORSYTH COUNTY	42	65	65	75	17	19	48.2
WILSON COUNTY	42	73	98	54	5	11	48.2
AVERY COUNTY	44	47	10	44	79	64	48.8
MITCHELL COUNTY	44	13	4	28	100	99	48.8
MADISON COUNTY	46	44	20	1	99	82	49.2
SURRY COUNTY	47	78	18	40	49	62	49.4
MECKLENBURG COUNTY	48	72	57	84	13	24	50
NORTHAMPTON COUNTY	49	68	99	58	23	3	50.2
PAMLICO COUNTY	50	31	77	34	51	59	50.4

YOUTH BEHAVIOR & SAFETY (YBS) RANKINGS

	OVERALL YOUTH BEHAVIOR & SAFETY RANKING	JUVENILE DELINQUENCY RANKING	SHORT-TERM SUSPENSION RANKING	JUVENILE DETENTION ADMISSION RANKING	CHILDREN IN DSS CUSTODY RANKING	CHILD ABUSE & NEGLECT RANKING	AVERAGE OF YBS RANKINGS
DAVIDSON COUNTY	51	62	37	66	43	45	50.6
MONTGOMERY COUNTY	51	79	74	1	53	46	50.6
TYRRELL COUNTY	53	97	49	1	73	34	50.8
Craven County	54	69	78	59	25	29	52
GUILFORD COUNTY	55	70	40	83	56	12	52.2
STANLY COUNTY	56	52	70	50	9	81	52.4
PASQUOTANK COUNTY	57	83	91	68	4	17	52.6
COLUMBUS COUNTY	58	30	60	72	67	35	52.8
DAVIE COUNTY	58	59	15	46	64	80	52.8
ASHE COUNTY	60	53	22	31	82	78	53.2
HAYWOOD COUNTY	61	33	30	37	71	100	54.2
LEE COUNTY	61	98	71	56	36	10	54.2
CASWELL COUNTY	63	51	82	64	45	38	56
ANSON COUNTY	64	19	100	75	28	60	56.4
CALDWELL COUNTY	64	34	25	73	89	61	56.4
NASH COUNTY	66	75	85	81	11	32	56.8
YADKIN COUNTY	67	99	13	80	58	36	57.2
CHEROKEE COUNTY	68	43	7	48	95	94	57.4
JONES COUNTY	69	95	31	86	61	18	58.2
LINCOLN COUNTY	69	82	42	61	54	52	58.2
STOKES COUNTY	71	57	26	39	94	77	58.6
ONslow COUNTY	72	77	39	89	46	47	59.6
ALEXANDER COUNTY	73	88	27	45	74	65	59.8
IREDELL COUNTY	73	81	45	49	48	76	59.8
NEW HANOVER COUNTY	75	25	56	55	84	85	61
BRUNSWICK COUNTY	76	67	55	53	63	68	61.2
GASTON COUNTY	76	39	83	99	57	28	61.2
RUTHERFORD COUNTY	78	38	58	47	86	79	61.6
RICHMOND COUNTY	79	96	86	96	24	26	65.6
VANCE COUNTY	79	45	97	94	29	63	65.6
HALIFAX COUNTY	81	92	92	56	15	74	65.8
SAMPSON COUNTY	82	50	53	89	69	71	66.4
ROCKINGHAM COUNTY	83	36	50	69	91	89	67
PENDER COUNTY	84	91	38	87	52	69	67.4
BURKE COUNTY	85	61	33	70	88	86	67.6
LENOIR COUNTY	86	66	84	95	38	56	67.8
MCDOWELL COUNTY	87	49	29	78	96	96	69.6
PITT COUNTY	87	86	93	88	40	41	69.6
YANCEY COUNTY	89	64	88	22	83	95	70.4
SCOTLAND COUNTY	90	56	75	77	55	90	70.6
WASHINGTON COUNTY	91	28	95	92	68	83	73.2
ALLEGHANY COUNTY	92	55	28	100	93	91	73.4
ROBESON COUNTY	93	58	94	51	75	98	75.2
PERSON COUNTY	94	76	62	85	76	84	76.6
EDGEcombe COUNTY	95	84	90	91	44	75	76.8
WILKES COUNTY	96	89	21	93	97	92	78.4
CUMBERLAND COUNTY	97	87	73	97	80	70	81.4
MARTIN COUNTY	98	100	87	98	78	48	82.2
BEAUFORT COUNTY	99	80	80	82	87	88	83.4
CLEVELAND COUNTY	100	94	81	78	81	87	84.2

YOUTH BEHAVIOR & SAFETY (YBS) DATA

	JUVENILE DELINQUENCY RATE PER 1,000	SHORT-TERM SUSPENSION RATE PER 1,000	JUVENILE DETENTION ADMISSION RATE PER 1,000	CHILDREN IN DSS CUSTODY RATE PER 1,000	CHILD ABUSE & NEGLECT RATE PER 1,000
ALAMANCE COUNTY	21.86	138.05	1.94	3.88	8.03
ALEXANDER COUNTY	30.85	76.45	1.07	12.73	13.50
ALLEGHANY COUNTY	18.60	77.50	4.84	20.58	21.08
ANSON COUNTY	12.44	525.92	2.11	4.60	12.85
ASHE COUNTY	18.35	66.76	0.56	14.55	16.37
AVERY COUNTY	17.76	51.72	1.04	13.74	13.38
BEAUFORT COUNTY	26.61	218.79	2.42	16.15	19.75
BERTIE COUNTY	18.59	209.68	0.72	3.18	7.15
BLADEN COUNTY	6.48	159.94	0.19	9.45	10.98
BRUNSWICK COUNTY	22.59	139.74	1.31	9.59	13.92
BUNCOMBE COUNTY	13.11	128.39	0.44	10.20	15.15
BURKE COUNTY	21.74	90.89	1.92	16.29	19.07
CABARRUS COUNTY	9.24	115.40	0.55	3.06	4.80
CALDWELL COUNTY	15.54	75.35	1.99	16.93	12.92
CAMDEN COUNTY	8.36	38.15	0.00	4.75	4.27
CARTERET COUNTY	11.51	114.34	1.28	10.25	12.71
CASWELL COUNTY	18.13	231.47	1.63	7.34	8.99
CATAWBA COUNTY	16.02	89.37	1.76	5.45	9.41
CHATHAM COUNTY	9.94	64.03	0.29	3.86	8.00
CHEROKEE COUNTY	17.30	40.76	1.14	21.34	22.34
CHOWAN COUNTY	31.85	169.06	0.48	0.69	1.37
CLAY COUNTY	10.44	15.30	0.00	17.10	26.16
CLEVELAND COUNTY	34.85	229.30	2.29	14.52	19.58
COLUMBUS COUNTY	14.98	156.69	1.97	10.26	8.77
CRAVEN COUNTY	23.60	210.32	1.42	4.33	7.83
CUMBERLAND COUNTY	30.04	196.66	3.91	14.02	14.21
CURRITUCK COUNTY	17.23	93.22	0.50	5.82	9.82
DARE COUNTY	34.13	56.93	0.42	1.88	8.68
DAVIDSON COUNTY	21.75	93.99	1.73	6.75	10.55
DAVIE COUNTY	21.62	57.09	1.10	9.78	16.65
DUPLIN COUNTY	16.71	175.64	1.00	5.16	10.46
DURHAM COUNTY	12.87	167.75	2.02	5.37	4.05
EDGECOMBE COUNTY	28.63	299.29	2.96	7.07	15.52
FORSYTH COUNTY	22.18	168.12	2.11	3.26	6.57
FRANKLIN COUNTY	11.35	185.97	0.39	9.52	13.54
GASTON COUNTY	17.11	236.61	4.65	9.22	7.79
GATES COUNTY	11.76	117.61	0.00	0.42	1.27
GRAHAM COUNTY	13.30	47.05	0.00	20.50	22.16
GRANVILLE COUNTY	6.58	139.56	0.71	4.84	10.85
GREENE COUNTY	17.74	118.41	0.00	7.93	3.08
GUILFORD COUNTY	23.69	96.76	2.50	9.08	4.72
HALIFAX COUNTY	33.67	331.17	1.40	3.15	15.49
HARNETT COUNTY	17.79	152.13	0.54	4.42	7.57
HAYWOOD COUNTY	15.15	83.02	0.77	11.97	28.00
HENDERSON COUNTY	15.09	71.02	0.32	9.45	10.99
HERTFORD COUNTY	17.11	296.28	0.88	0.85	2.97
HOKE COUNTY	14.91	164.30	0.56	5.38	6.89
HYDE COUNTY	3.43	213.79	0.00	7.52	2.15
IREDELL COUNTY	26.85	116.43	1.16	7.86	15.84
JACKSON COUNTY	24.87	47.56	0.00	11.36	13.50

YOUTH BEHAVIOR & SAFETY (YBS) DATA

	JUVENILE DELINQUENCY RATE PER 1,000	SHORT-TERM SUSPENSION RATE PER 1,000	JUVENILE DETENTION ADMISSION RATE PER 1,000	CHILDREN IN DSS CUSTODY RATE PER 1,000	CHILD ABUSE & NEGLECT RATE PER 1,000
JOHNSTON COUNTY	12.37	100.73	0.32	3.87	6.98
JONES COUNTY	36.01	88.85	2.72	9.51	6.01
LEE COUNTY	37.03	191.40	1.40	5.50	4.36
LENOIR COUNTY	22.57	254.80	3.49	5.59	12.36
LINCOLN COUNTY	27.19	114.29	1.51	8.50	11.22
MACON COUNTY	21.72	37.88	0.22	6.71	14.80
MADISON COUNTY	17.47	65.36	0.00	29.18	16.96
MARTIN COUNTY	47.33	289.62	4.33	13.72	10.77
MCDOWELL COUNTY	17.86	78.57	2.29	21.40	25.50
MECKLENBURG COUNTY	24.56	145.48	2.57	3.09	7.15
MITCHELL COUNTY	11.03	35.54	0.51	41.97	27.13
MONTGOMERY COUNTY	26.60	199.12	0.00	8.46	10.74
MOORE COUNTY	13.49	93.18	0.29	3.27	5.01
NASH COUNTY	25.24	275.60	2.37	3.04	8.68
NEW HANOVER COUNTY	14.59	143.55	1.36	14.98	19.03
NORTHAMPTON COUNTY	23.55	506.36	1.41	3.89	2.07
ONSLOW COUNTY	25.67	95.47	2.86	7.44	10.76
ORANGE COUNTY	6.52	34.42	0.36	2.35	11.81
PAMLICO COUNTY	15.09	210.23	0.65	8.35	12.78
PASQUOTANK COUNTY	28.44	302.71	1.78	1.53	6.00
PENDER COUNTY	32.12	95.13	2.78	8.37	13.98
PERQUIMANS COUNTY	28.99	118.08	1.64	3.14	5.10
PERSON COUNTY	25.50	164.04	2.70	12.98	18.99
PITT COUNTY	29.87	338.87	2.80	6.42	9.43
POLK COUNTY	14.75	58.96	1.54	15.10	10.46
RANDOLPH COUNTY	17.16	53.17	0.48	5.56	6.81
RICHMOND COUNTY	36.33	281.90	3.58	3.97	7.55
ROBESON COUNTY	20.00	342.43	1.28	12.94	26.62
ROCKINGHAM COUNTY	16.69	126.95	1.87	18.51	20.08
ROWAN COUNTY	9.57	192.53	0.58	2.90	11.47
RUTHERFORD COUNTY	17.09	150.11	1.11	15.40	16.40
SAMPSON COUNTY	18.06	138.54	2.86	11.22	14.66
SCOTLAND COUNTY	19.30	202.71	2.28	8.75	20.86
STANLY COUNTY	18.31	188.22	1.21	2.79	16.84
STOKES COUNTY	19.44	76.38	0.78	21.10	15.91
SURRY COUNTY	26.38	62.58	0.82	7.86	13.13
SWAIN COUNTY	10.54	57.57	0.00	26.65	12.59
TRANSYLVANIA COUNTY	10.06	53.65	0.50	13.21	11.60
TYRRELL COUNTY	36.53	120.81	0.00	12.42	8.70
UNION COUNTY	24.39	92.77	0.77	2.63	3.78
VANCE COUNTY	17.48	402.02	3.38	4.68	13.30
WAKE COUNTY	10.21	74.90	0.90	3.55	5.84
WARREN COUNTY	12.29	357.95	1.47	4.56	6.71
WASHINGTON COUNTY	14.79	343.41	3.12	10.61	17.05
WATAUGA COUNTY	14.38	11.13	0.41	12.25	9.19
WAYNE COUNTY	14.60	175.37	1.56	6.51	8.88
WILKES COUNTY	30.94	66.45	3.32	23.07	22.02
WILSON COUNTY	24.82	409.85	1.35	1.65	4.48
YADKIN COUNTY	39.55	56.57	2.32	9.33	8.82
YANCEY COUNTY	21.87	291.47	0.43	14.60	25.32

YOUTH BEHAVIOR AND SAFETY INDICATORS

JUVENILE DELINQUENCY

The juvenile delinquency rate is defined as the number of delinquent complaints received by court services offices per 1,000 youth ages 6-15 in 2017.

SHORT-TERM SUSPENSIONS

The short-term suspension rate reflects the number of suspensions for 10 days or less per 1,000 school age students in the 2016-2017 school year from the 115 Local Education Agencies (LEAs) in North Carolina.

JUVENILE DETENTION ADMISSIONS

The juvenile detention admissions rate represents the number of times individual youth were placed in detention per 1,000 youth ages 6-17 in 2017.

CHILDREN IN DSS CUSTODY

The children in DSS custody rate represents the number of children who were in Division of Social Services (DSS) custody at some point during 2017 per 1,000 youth under age 18. Children who entered into DSS custody more than once during 2017 are counted only once in this data set.

CHILD ABUSE AND NEGLECT

The confirmed child abuse and neglect rate represents the number of children with confirmed cases of child abuse and neglect per 1,000 youth under age 18 in 2017. Confirmed cases include children with findings of Substantiated; Services Needed; and Services Provided, CPS Services No Longer Needed.

NORTH CAROLINA DATA

Juvenile Delinquency Rate per 1,000:	19.58
Short-Term Suspension Rate per 1,000:	142.39
Juvenile Detention Admissions Rate per 1,000:	1.69
Children in DSS Custody Rate per 1,000:	6.99
Child Abuse & Neglect Rate per 1,000:	9.81



EDUCATION

EDUCATION RANKINGS

	OVERALL EDUCATION RANKING	GRADUATION RATE	3RD GRADE READING PROFICIENCY RANKING	NC MATH I PROFICIENCY RANKING	ACT COMPOSITE RANKING	MET OR EXCEEDED GROWTH RANKING	AVERAGE OF EDUCATION RANKINGS
DARE COUNTY	1	4	13	10	8	1	7.2
ORANGE COUNTY	2	29	9	3	1	7	9.8
UNION COUNTY	2	9	4	3	4	29	9.8
HENDERSON COUNTY	4	8	15	6	9	12	10
WATAUGA COUNTY	5	14	6	15	2	15	10.4
YANCEY COUNTY	6	15	17	12	20	1	13
POLK COUNTY	7	38	5	10	5	22	16
SURRY COUNTY	8	21	25	8	36	9	19.8
LINCOLN COUNTY	9	18	11	21	36	14	20
PENDER COUNTY	10	32	20	30	14	19	23
MOORE COUNTY	11	15	11	31	20	40	23.4
AVERY COUNTY	12	1	23	23	57	15	23.8
JONES COUNTY	13	1	3	40	75	1	24
CARTERET COUNTY	14	57	10	5	2	52	25.2
PAMLICO COUNTY	15	6	84	2	41	1	26.8
HAYWOOD COUNTY	16	61	21	19	14	22	27.4
WAKE COUNTY	17	38	8	9	6	84	29
IREDELL COUNTY	18	36	29	22	12	57	31.2
CALDWELL COUNTY	19	27	31	26	33	44	32.2
GUILFORD COUNTY	20	24	62	28	23	26	32.6
ALEXANDER COUNTY	21	57	19	44	12	35	33.4
DAVIE COUNTY	21	48	40	35	10	34	33.4
CURRITUCK COUNTY	23	17	30	33	26	62	33.6
BURKE COUNTY	24	54	61	17	29	10	34.2
CHEROKEE COUNTY	25	9	7	58	49	49	34.4
CATAWBA COUNTY	26	18	52	42	41	22	35
NEW HANOVER COUNTY	27	75	22	20	7	56	36
MECKLENBURG COUNTY	28	29	46	17	29	60	36.2
YADKIN COUNTY	29	37	36	32	52	28	37
MACON COUNTY	30	13	28	54	29	62	37.2
TRANSYLVANIA COUNTY	31	53	14	14	14	92	37.4
ONslow COUNTY	32	27	37	60	39	25	37.6
JACKSON COUNTY	33	51	81	24	14	20	38
CHATHAM COUNTY	34	45	37	51	26	33	38.4
JOHNSTON COUNTY	35	12	48	16	36	81	38.6
BUNCOMBE COUNTY	36	40	34	27	19	75	39
STOKES COUNTY	37	49	16	55	23	58	40.2
MADISON COUNTY	38	42	1	70	26	67	41.2
RANDOLPH COUNTY	39	23	54	46	57	27	41.4
CABARRUS COUNTY	40	29	48	40	20	78	43
MCDOWELL COUNTY	40	65	47	29	63	11	43
GRAHAM COUNTY	42	7	31	37	45	98	43.6
CAMDEN COUNTY	43	63	2	61	10	87	44.6
GASTON COUNTY	44	40	69	44	45	30	45.6
PERQUIMANS COUNTY	45	18	42	33	70	67	46
MITCHELL COUNTY	46	46	67	24	23	72	46.4
CLAY COUNTY	47	32	33	68	33	67	46.6
ASHE COUNTY	48	43	17	75	14	87	47.2
DAVIDSON COUNTY	49	57	45	46	52	38	47.6
TYRRELL COUNTY	49	11	65	89	72	1	47.6

EDUCATION RANKINGS

	OVERALL EDUCATION RANKING	GRADUATION RATE	3RD GRADE READING PROFICIENCY RANKING	NC MATH I PROFICIENCY RANKING	ACT COMPOSITE RANKING	MET OR EXCEEDED GROWTH RANKING	AVERAGE OF EDUCATION RANKINGS
CLEVELAND COUNTY	51	26	42	69	49	55	48.2
FORSYTH COUNTY	52	52	64	46	29	51	48.4
HYDE COUNTY	53	3	24	72	81	67	49.4
MONTGOMERY COUNTY	53	24	77	49	79	18	49.4
STANLY COUNTY	55	43	41	38	67	65	50.8
WILKES COUNTY	55	35	60	49	63	47	50.8
FRANKLIN COUNTY	57	65	74	39	41	36	51
CRAVEN COUNTY	58	67	35	36	39	79	51.2
RICHMOND COUNTY	59	97	72	1	81	8	51.8
ROCKINGHAM COUNTY	60	63	69	55	60	20	53.4
RUTHERFORD COUNTY	61	68	25	59	45	77	54.8
SAMPSON COUNTY	62	84	44	13	70	66	55.4
GATES COUNTY	63	32	79	64	63	40	55.6
LEE COUNTY	63	22	37	81	52	86	55.6
CUMBERLAND COUNTY	65	81	51	57	60	32	56.2
BRUNSWICK COUNTY	66	74	53	42	44	72	57
PERSON COUNTY	67	95	50	63	67	12	57.4
GRANVILLE COUNTY	68	70	75	66	75	6	58.4
ALAMANCE COUNTY	69	79	62	52	67	43	60.6
SWAIN COUNTY	70	76	27	76	33	92	60.8
GREENE COUNTY	71	4	89	85	89	40	61.4
HOKE COUNTY	72	95	78	7	85	49	62.8
BLADEN COUNTY	73	47	59	72	92	48	63.6
HARNETT COUNTY	74	86	68	83	57	31	65
PITT COUNTY	75	57	76	62	52	85	66.4
ALLEGHANY COUNTY	76	54	57	81	52	99	68.6
COLUMBUS COUNTY	77	62	86	67	88	45	69.6
ROWAN COUNTY	78	77	69	87	60	61	70.8
WILSON COUNTY	79	100	73	65	45	79	72.4
ANSON COUNTY	80	93	86	77	92	15	72.6
DUPLIN COUNTY	81	88	96	71	74	36	73
CHOWAN COUNTY	82	73	55	91	81	67	73.4
MARTIN COUNTY	83	81	94	78	49	72	74.8
BEAUFORT COUNTY	84	90	58	74	63	92	75.4
DURHAM COUNTY	84	87	88	84	72	46	75.4
WARREN COUNTY	86	94	55	98	80	53	76
SCOTLAND COUNTY	87	78	90	52	86	81	77.4
BERTIE COUNTY	88	69	80	99	92	53	78.6
PASQUOTANK COUNTY	89	54	83	92	86	81	79.2
WAYNE COUNTY	90	70	85	80	77	89	80.2
ROBESON COUNTY	91	49	98	93	89	76	81
HALIFAX COUNTY	92	91	93	96	92	39	82.2
LENOIR COUNTY	93	85	82	90	91	64	82.4
NASH COUNTY	94	70	95	79	81	91	83.2
CASWELL COUNTY	95	99	66	95	77	100	87.4
HERTFORD COUNTY	96	79	92	88	97	90	89.2
NORTHAMPTON COUNTY	97	98	100	100	99	59	91.2
EDGECOMBE COUNTY	98	89	99	86	96	95	93
VANCE COUNTY	99	83	91	97	98	97	93.2
WASHINGTON COUNTY	100	91	97	94	100	96	95.6

EDUCATION DATA

	GRADUATION RATE	3RD GRADE READING PROFICIENCY	NC MATH I PROFICIENCY	ACT COMPOSITE SCORE	PERCENTAGE OF SCHOOLS THAT MET OR EXCEEDED GROWTH
ALAMANCE COUNTY	82.40	53.40	60.90	17.50	79.40%
ALEXANDER COUNTY	86.20	64.30	62.70	19.30	81.80%
ALLEGHANY COUNTY	86.30	54.70	47.50	17.90	25.00%
ANSON COUNTY	79.90	46.60	51.10	16.00	90.00%
ASHE COUNTY	87.80	64.50	53.00	19.20	60.00%
AVERY COUNTY	95.00	63.40	67.60	17.80	90.00%
BEAUFORT COUNTY	80.60	54.50	53.30	17.60	50.00%
BERTIE COUNTY	84.80	48.30	32.80	16.00	75.00%
BLADEN COUNTY	87.50	54.10	53.80	16.00	77.00%
BRUNSWICK COUNTY	83.80	55.70	62.90	18.20	66.60%
BUNCOMBE COUNTY	88.30	61.00	67.10	19.10	66.00%
BURKE COUNTY	86.30	53.60	68.90	18.70	92.00%
CABARRUS COUNTY	89.40	57.70	63.00	19.00	64.50%
CALDWELL COUNTY	89.50	61.80	67.20	18.60	79.20%
CAMDEN COUNTY	85.40	77.20	58.40	19.50	60.00%
CARTERET COUNTY	86.20	66.80	78.20	21.10	75.10%
CASWELL COUNTY	76.10	51.90	37.20	17.00	0.00%
CATAWBA COUNTY	90.80	55.90	62.90	18.30	85.70%
CHATHAM COUNTY	87.70	59.80	61.50	18.80	82.40%
CHEROKEE COUNTY	92.50	67.90	59.80	18.00	76.90%
CHOWAN COUNTY	84.10	55.20	40.70	16.70	66.70%
CLAY COUNTY	89.30	61.50	55.80	18.60	66.70%
CLEVELAND COUNTY	89.70	58.90	55.70	18.00	74.10%
COLUMBUS COUNTY	85.70	46.60	56.10	16.40	78.70%
CRAVEN COUNTY	85.10	60.50	63.90	18.40	64.00%
CUMBERLAND COUNTY	82.10	57.30	60.20	17.70	82.60%
CURRITUCK COUNTY	90.90	61.90	65.00	18.80	70.00%
DARE COUNTY	94.50	65.90	72.40	19.80	100.00%
DAVIDSON COUNTY	86.20	58.50	62.60	17.90	80.90%
DAVIE COUNTY	87.30	59.60	64.60	19.50	81.90%
DUPLIN COUNTY	81.30	39.70	55.00	17.20	81.30%
DURHAM COUNTY	81.40	44.60	46.70	17.30	78.00%
EDGECOMBE COUNTY	80.70	32.40	45.20	15.70	42.80%
FORSYTH COUNTY	86.50	52.80	62.60	18.70	76.30%
FRANKLIN COUNTY	85.30	50.10	63.10	18.30	81.30%
GASTON COUNTY	88.30	51.00	62.70	18.10	83.70%
GATES COUNTY	89.30	48.90	57.40	17.60	80.00%
GRAHAM COUNTY	93.20	61.80	63.30	18.10	33.30%
GRANVILLE COUNTY	84.30	49.90	56.20	17.10	94.40%
GREENE COUNTY	94.50	44.10	45.70	16.20	80.00%
GUILFORD COUNTY	89.80	53.40	66.90	18.90	84.80%
HALIFAX COUNTY	80.40	41.00	36.20	16.00	80.50%
HARNETT COUNTY	81.50	51.10	46.80	17.80	83.30%
HAYWOOD COUNTY	85.80	63.80	68.20	19.20	85.70%
HENDERSON COUNTY	92.90	64.70	75.40	19.70	90.90%
HERTFORD COUNTY	82.40	41.10	43.50	15.60	57.20%
HOKE COUNTY	78.80	49.10	75.20	16.60	76.90%
HYDE COUNTY	94.60	63.00	53.80	16.70	66.70%
IREDELL COUNTY	88.70	62.10	67.70	19.30	73.00%
JACKSON COUNTY	86.70	48.10	67.40	19.20	87.50%

EDUCATION DATA

	GRADUATION RATE	3RD GRADE READING PROFICIENCY	NC MATH I PROFICIENCY	ACT COMPOSITE SCORE	PERCENTAGE OF SCHOOLS THAT MET OR EXCEEDED GROWTH
JOHNSTON COUNTY	92.20	57.70	69.60	18.50	63.60%
JONES COUNTY	95.00	74.70	63.00	17.10	100.00%
LEE COUNTY	90.10	59.80	47.50	17.90	61.60%
LENOIR COUNTY	81.70	48.00	41.00	16.10	68.80%
LINCOLN COUNTY	90.80	66.50	67.80	18.50	90.50%
MACON COUNTY	91.70	62.50	60.60	18.70	70.00%
MADISON COUNTY	88.00	79.10	55.60	18.80	66.70%
MARTIN COUNTY	82.10	40.60	51.00	18.00	66.60%
MCDOWELL COUNTY	85.30	57.80	65.90	17.60	91.70%
MECKLENBURG COUNTY	89.40	58.40	68.90	18.70	71.20%
MITCHELL COUNTY	87.60	51.50	67.40	18.90	66.60%
MONTGOMERY COUNTY	89.80	49.20	62.50	16.90	88.90%
MOORE COUNTY	91.00	66.50	65.30	19.00	80.00%
NASH COUNTY	84.30	40.50	50.70	16.70	54.10%
NEW HANOVER COUNTY	83.40	63.70	67.90	20.00	73.70%
NORTHAMPTON COUNTY	76.20	30.30	21.90	14.90	71.50%
ONSLOW COUNTY	89.50	59.80	58.60	18.40	85.30%
ORANGE COUNTY	89.40	67.20	78.80	22.60	93.40%
PAMLICO COUNTY	94.10	47.70	80.00	18.30	100.00%
PASQUOTANK COUNTY	86.30	47.90	39.80	16.50	63.60%
PENDER COUNTY	89.30	64.10	65.40	19.20	87.60%
PERQUIMANS COUNTY	90.80	58.90	65.00	17.40	66.70%
PERSON COUNTY	78.80	57.50	57.50	17.50	90.90%
PITT COUNTY	86.20	49.70	57.70	17.90	62.90%
POLK COUNTY	88.50	70.10	72.40	20.30	85.70%
RANDOLPH COUNTY	89.90	55.60	62.60	17.80	84.70%
RICHMOND COUNTY	76.70	50.70	80.20	16.70	92.80%
ROBESON COUNTY	87.00	38.60	38.80	16.20	65.80%
ROCKINGHAM COUNTY	85.40	51.00	60.40	17.70	87.50%
ROWAN COUNTY	83.00	51.00	44.00	17.70	70.60%
RUTHERFORD COUNTY	85.00	62.70	59.10	18.10	64.70%
SAMPSON COUNTY	81.80	58.70	71.40	17.40	67.80%
SCOTLAND COUNTY	82.80	43.50	60.90	16.50	63.60%
STANLY COUNTY	87.80	59.50	63.20	17.50	68.40%
STOKES COUNTY	87.00	64.60	60.40	18.90	72.30%
SURRY COUNTY	90.70	62.70	74.70	18.50	92.20%
SWAIN COUNTY	83.10	62.60	52.70	18.60	50.00%
TRANSYLVANIA COUNTY	86.40	65.70	71.00	19.20	50.00%
TYRRELL COUNTY	92.30	52.10	41.70	17.30	100.00%
UNION COUNTY	92.50	70.40	78.80	20.70	84.00%
VANCE COUNTY	81.90	41.60	35.70	15.10	37.60%
WAKE COUNTY	88.50	67.40	74.40	20.20	63.10%
WARREN COUNTY	79.30	55.20	35.10	16.80	75.00%
WASHINGTON COUNTY	80.40	39.30	38.20	14.20	40.00%
WATAUGA COUNTY	91.20	68.40	70.00	21.10	90.00%
WAYNE COUNTY	84.30	47.50	47.60	17.00	58.60%
WILKES COUNTY	88.90	53.90	62.50	17.60	77.30%
WILSON COUNTY	75.90	50.50	57.20	18.10	64.00%
YADKIN COUNTY	88.60	60.40	65.10	17.90	84.60%
YANCEY COUNTY	91.00	64.50	72.10	19.00	100.00%

EDUCATION INDICATORS

GRADUATION RATE

The cohort graduation rate reports the graduation rate for the 4-year cohort entering 9th grade in 2013-2014 and graduating in 2016-2017 or earlier.

3RD GRADE READING PROFICIENCY

The third grade reading proficiency represents the percentage of students' scores at or above grade level proficiency on the third grade reading end-of-grade (EOG) test in 2016-2017.

NC MATH I PROFICIENCY

The NC Math I proficiency indicator represents the percentage of students' scores at or above grade level proficiency on the NC Math I end-of-course (EOC) test in 2016-2017.

ACT COMPOSITE SCORE

The ACT composite score indicator represents the average composite ACT score for 11th grade students in each of North Carolina's 115 LEAs in 2016-2017.

PERCENTAGE OF SCHOOLS THAT MET OR EXCEEDED GROWTH

The percentage of schools that met or exceeded growth indicator represents the percentage of schools that met or exceeded growth in each of North Carolina's 115 LEAs in 2016-2017. The EVAAS school-wide Accountability Growth measure includes all EOG (math, English language arts, and science) and EOC (Math I, English II, and Biology) scores.

NORTH CAROLINA DATA

Graduation Rate:	86.50
3rd Grade Reading EOG Percent Proficiency:	57.80%
NC Math 1 EOC Percent Proficiency:	64.30%
ACT Composite Score:	18.60
Percentage of Schools That Met or Exceeded Growth:	73.70%



ECONOMIC DEVELOPMENT

ECONOMIC DEVELOPMENT RANKINGS

	OVERALL ECONOMIC DEVELOPMENT RANKING	MEDIAN HOUSEHOLD INCOME RANKING	CHILD POVERTY RANKING	UNEMPLOYMENT RANKING	ADULTS WITH BACHELOR'S DEGREE RANKING	SINGLE-PARENT HOUSEHOLDS RANKING	AVERAGE OF ECONOMIC DEVELOPMENT RANKINGS
ORANGE COUNTY	1	3	2	3	1	2	2.2
WAKE COUNTY	2	2	3	4	2	8	3.8
UNION COUNTY	3	1	3	8	11	1	4.8
CHATHAM COUNTY	4	6	9	4	6	25	10
CABARRUS COUNTY	5	9	5	15	17	6	10.4
WATAUGA COUNTY	6	38	13	12	5	2	14
LINCOLN COUNTY	7	14	8	8	42	2	14.8
DAVIE COUNTY	8	12	16	8	29	10	15
HENDERSON COUNTY	9	27	17	4	14	17	15.8
BUNCOMBE COUNTY	10	30	19	1	8	25	16.6
CURRITUCK COUNTY	10	8	7	36	30	2	16.6
MOORE COUNTY	10	7	6	36	9	25	16.6
MECKLENBURG COUNTY	13	4	13	23	4	43	17.4
IREDELL COUNTY	14	15	12	23	21	22	18.6
CATAWBA COUNTY	15	18	21	15	34	22	22
JOHNSTON COUNTY	16	11	29	15	33	25	22.6
NEW HANOVER COUNTY	17	17	27	15	7	54	24
CAMDEN COUNTY	18	5	1	36	57	22	24.2
POLK COUNTY	19	51	28	15	13	17	24.8
GRANVILLE COUNTY	20	21	15	4	36	54	26
CARTERET COUNTY	21	20	26	36	22	33	27.4
PENDER COUNTY	22	24	17	48	24	25	27.6
DARE COUNTY	23	13	11	83	19	17	28.6
ALEXANDER COUNTY	24	37	10	2	83	17	29.8
DURHAM COUNTY	25	10	50	12	3	77	30.4
HAYWOOD COUNTY	26	41	38	12	25	43	31.8
ONslow COUNTY	27	35	20	63	42	6	33.2
STANLY COUNTY	28	34	22	15	62	43	35.2
ALAMANCE COUNTY	29	40	24	23	30	60	35.4
GUILFORD COUNTY	29	23	23	55	10	66	35.4
FORSYTH COUNTY	31	28	55	32	12	54	36.2
FRANKLIN COUNTY	32	22	46	48	36	33	37
DAVIDSON COUNTY	33	43	30	23	57	33	37.2
GATES COUNTY	34	32	40	36	69	10	37.4
BRUNSWICK COUNTY	35	16	30	77	20	51	38.8
HARNETT COUNTY	35	25	41	63	40	25	38.8
TRANSYLVANIA COUNTY	37	44	50	32	18	54	39.6
STOKES COUNTY	38	36	24	23	83	33	39.8
SURRY COUNTY	39	63	43	23	62	10	40.2
CRAVEN COUNTY	40	26	61	48	25	43	40.6
MADISON COUNTY	40	69	50	23	23	38	40.6
GASTON COUNTY	42	33	32	44	38	60	41.4
LEE COUNTY	42	19	41	69	35	43	41.4
YADKIN COUNTY	44	46	34	8	93	33	42.8
AVERY COUNTY	45	76	66	32	42	10	45.2
CALDWELL COUNTY	45	55	35	36	75	25	45.2
WILKES COUNTY	47	66	54	23	70	15	45.6
JACKSON COUNTY	48	50	38	55	16	70	45.8
YANCEY COUNTY	49	74	58	44	45	10	46.2
CLAY COUNTY	50	60	65	62	28	17	46.4

ECONOMIC DEVELOPMENT RANKINGS

	OVERALL ECONOMIC DEVELOPMENT RANKING	MEDIAN HOUSEHOLD INCOME RANKING	CHILD POVERTY RANKING	UNEMPLOYMENT RANKING	ADULTS WITH BACHELOR'S DEGREE RANKING	SINGLE-PARENT HOUSEHOLDS RANKING	AVERAGE OF ECONOMIC DEVELOPMENT RANKINGS
ASHE COUNTY	51	77	55	15	49	40	47.2
MCDOWELL COUNTY	52	64	60	15	65	40	48.8
MACON COUNTY	53	65	62	48	32	38	49
RANDOLPH COUNTY	54	57	45	32	71	43	49.6
ROWAN COUNTY	55	45	37	48	55	64	49.8
HOKE COUNTY	56	29	44	78	56	43	50
BURKE COUNTY	57	67	35	23	61	70	51.2
PERSON COUNTY	58	31	33	48	71	83	53.2
PITT COUNTY	59	49	74	59	15	70	53.4
MONTGOMERY COUNTY	60	59	64	44	81	25	54.6
PAMLICO COUNTY	61	39	75	55	50	60	55.8
MITCHELL COUNTY	62	78	59	72	57	15	56.2
NASH COUNTY	63	42	46	85	40	70	56.6
CUMBERLAND COUNTY	64	58	55	78	25	70	57.2
BEAUFORT COUNTY	65	61	80	63	48	40	58.4
PERQUIMANS COUNTY	66	52	67	78	45	54	59.2
ROCKINGHAM COUNTY	67	48	46	69	76	66	61
CASWELL COUNTY	68	53	71	59	85	43	62.2
PASQUOTANK COUNTY	69	47	77	75	39	77	63
WAYNE COUNTY	70	56	80	63	45	77	64.2
CHEROKEE COUNTY	71	86	71	63	51	51	64.4
CLEVELAND COUNTY	72	80	63	48	62	77	66
JONES COUNTY	73	70	83	36	79	66	66.8
GRAHAM COUNTY	74	89	67	92	79	8	67
RUTHERFORD COUNTY	75	75	53	88	60	64	68
ALLEGHANY COUNTY	76	84	86	69	54	51	68.8
SWAIN COUNTY	77	71	49	63	74	88	69
SAMPSON COUNTY	78	68	80	55	89	54	69.2
CHOWAN COUNTY	79	62	73	74	52	89	70
WILSON COUNTY	80	54	70	95	53	83	71
LENOIR COUNTY	81	83	91	44	86	66	74
MARTIN COUNTY	82	91	77	78	67	60	74.6
DUPLIN COUNTY	83	82	75	59	95	70	76.2
GREENE COUNTY	84	79	99	36	96	83	78.6
ANSON COUNTY	85	72	84	72	97	83	81.6
BLADEN COUNTY	86	87	69	83	77	94	82
HERTFORD COUNTY	87	85	89	78	71	92	83
WARREN COUNTY	88	92	84	94	67	83	84
COLUMBUS COUNTY	89	90	86	75	89	82	84.4
HYDE COUNTY	89	73	79	100	100	70	84.4
RICHMOND COUNTY	91	93	90	85	78	90	87.2
SCOTLAND COUNTY	92	88	95	98	65	93	87.8
VANCE COUNTY	93	81	92	89	92	96	90
BERTIE COUNTY	94	100	94	85	91	81	90.2
NORTHAMPTON COUNTY	95	94	96	89	87	100	93.2
ROBESON COUNTY	96	99	100	91	87	90	93.4
HALIFAX COUNTY	97	98	97	96	81	96	93.6
TYRRELL COUNTY	98	96	88	97	99	95	95
EDGEcombe COUNTY	99	97	93	98	94	98	96
WASHINGTON COUNTY	100	95	98	92	98	99	96.4

ECONOMIC DEVELOPMENT DATA

	MEDIAN HOUSEHOLD INCOME	PERCENTAGE OF CHILDREN LIVING IN POVERTY	UNEMPLOYMENT RATE	ADULTS WITH AT LEAST A BACHELOR'S DEGREE	CHILDREN LIVING IN SINGLE-PARENT HOUSEHOLDS
ALAMANCE COUNTY	\$47,914	20.60%	4.30	22.90%	39.00%
ALEXANDER COUNTY	\$48,577	16.10%	3.70	13.90%	30.00%
ALLEGHANY COUNTY	\$38,994	34.70%	5.20	18.70%	37.00%
ANSON COUNTY	\$41,266	33.00%	5.30	9.20%	46.00%
ASHE COUNTY	\$40,611	25.10%	4.20	19.50%	35.00%
AVERY COUNTY	\$40,682	27.50%	4.40	20.20%	28.00%
BEAUFORT COUNTY	\$43,497	31.10%	5.10	19.60%	35.00%
BERTIE COUNTY	\$33,022	39.20%	6.10	12.30%	44.00%
BLADEN COUNTY	\$38,059	28.40%	6.00	14.50%	55.00%
BRUNSWICK COUNTY	\$56,227	21.50%	5.70	28.00%	37.00%
BUNCOMBE COUNTY	\$50,271	17.60%	3.50	38.50%	32.00%
BURKE COUNTY	\$42,179	22.10%	4.30	16.70%	42.00%
CABARRUS COUNTY	\$62,167	13.60%	4.20	30.00%	26.00%
CALDWELL COUNTY	\$44,798	22.10%	4.50	14.80%	32.00%
CAMDEN COUNTY	\$64,086	10.70%	4.50	18.10%	31.00%
CARTERET COUNTY	\$53,192	20.90%	4.50	26.70%	33.00%
CASWELL COUNTY	\$44,998	28.80%	4.90	13.70%	36.00%
CATAWBA COUNTY	\$53,348	18.70%	4.20	21.50%	31.00%
CHATHAM COUNTY	\$63,373	16.00%	3.90	40.10%	32.00%
CHEROKEE COUNTY	\$38,283	28.80%	5.10	19.20%	37.00%
CHOWAN COUNTY	\$43,182	29.20%	5.50	19.00%	51.00%
CLAY COUNTY	\$43,684	27.40%	5.00	23.10%	30.00%
CLEVELAND COUNTY	\$39,911	26.60%	4.70	16.50%	43.00%
COLUMBUS COUNTY	\$37,639	34.70%	5.60	12.50%	45.00%
CRAVEN COUNTY	\$51,390	26.40%	4.70	24.30%	36.00%
CUMBERLAND COUNTY	\$44,065	25.10%	5.80	24.30%	42.00%
CURRITUCK COUNTY	\$62,397	15.00%	4.50	22.90%	25.00%
DARE COUNTY	\$57,316	16.30%	6.00	29.80%	30.00%
DAVIDSON COUNTY	\$47,595	21.50%	4.30	18.10%	33.00%
DAVIE COUNTY	\$58,147	17.10%	4.00	23.00%	28.00%
DUPLIN COUNTY	\$39,470	30.50%	4.90	10.80%	42.00%
DURHAM COUNTY	\$60,045	24.30%	4.10	47.30%	43.00%
EDGECOMBE COUNTY	\$35,130	38.50%	7.80	11.60%	59.00%
FORSYTH COUNTY	\$50,803	25.10%	4.40	33.80%	38.00%
FRANKLIN COUNTY	\$53,076	23.90%	4.70	21.00%	33.00%
GASTON COUNTY	\$50,016	21.70%	4.60	20.50%	39.00%
GATES COUNTY	\$50,164	22.60%	4.50	15.70%	28.00%
GRAHAM COUNTY	\$37,748	28.00%	6.80	14.20%	27.00%
GRANVILLE COUNTY	\$53,142	17.00%	3.90	21.00%	38.00%
GREENE COUNTY	\$40,131	43.70%	4.50	9.80%	46.00%
GUILFORD COUNTY	\$52,284	19.70%	4.80	34.90%	41.00%
HALIFAX COUNTY	\$34,027	40.20%	7.40	14.00%	58.00%
HARNETT COUNTY	\$51,406	22.90%	5.10	20.30%	32.00%
HAYWOOD COUNTY	\$47,872	22.50%	4.10	24.30%	36.00%
HENDERSON COUNTY	\$51,314	17.50%	3.90	31.20%	30.00%
HERTFORD COUNTY	\$38,786	36.70%	5.80	15.30%	53.00%
HOKE COUNTY	\$50,777	23.20%	5.80	18.30%	36.00%
HYDE COUNTY	\$41,214	30.80%	8.50	7.20%	42.00%
IREDELL COUNTY	\$56,559	16.40%	4.30	26.90%	31.00%
JACKSON COUNTY	\$46,113	22.50%	4.80	30.50%	42.00%

ECONOMIC DEVELOPMENT DATA

	MEDIAN HOUSEHOLD INCOME	PERCENTAGE OF CHILDREN LIVING IN POVERTY	UNEMPLOYMENT RATE	ADULTS WITH AT LEAST A BACHELOR'S DEGREE	CHILDREN LIVING IN SINGLE-PARENT HOUSEHOLDS
JOHNSTON COUNTY	\$58,647	21.40%	4.20	21.70%	32.00%
JONES COUNTY	\$41,523	32.60%	4.50	14.20%	41.00%
LEE COUNTY	\$53,297	22.90%	5.20	21.20%	36.00%
LENOIR COUNTY	\$39,411	37.70%	4.60	13.50%	41.00%
LINCOLN COUNTY	\$57,042	15.10%	4.00	20.20%	25.00%
MACON COUNTY	\$42,456	26.50%	4.70	22.20%	34.00%
MADISON COUNTY	\$41,891	24.30%	4.30	25.90%	34.00%
MARTIN COUNTY	\$37,225	30.70%	5.80	15.80%	39.00%
MCDOWELL COUNTY	\$42,853	25.90%	4.20	15.90%	35.00%
MECKLENBURG COUNTY	\$65,750	16.80%	4.30	44.10%	36.00%
MITCHELL COUNTY	\$40,589	25.60%	5.30	18.10%	29.00%
MONTGOMERY COUNTY	\$43,695	27.30%	4.60	14.00%	32.00%
MOORE COUNTY	\$62,781	14.80%	4.50	36.00%	32.00%
NASH COUNTY	\$47,597	23.90%	6.10	20.30%	42.00%
NEW HANOVER COUNTY	\$53,692	21.00%	4.20	38.90%	38.00%
NORTHAMPTON COUNTY	\$36,190	40.10%	6.30	12.80%	71.00%
ONSWLOW COUNTY	\$49,634	18.30%	5.10	20.20%	26.00%
ORANGE COUNTY	\$69,422	11.20%	3.80	57.60%	25.00%
PAMLICO COUNTY	\$48,410	30.50%	4.80	19.40%	39.00%
PASQUOTANK COUNTY	\$46,709	30.70%	5.60	20.40%	43.00%
PENDER COUNTY	\$52,187	17.50%	4.70	25.60%	32.00%
PERQUIMANS COUNTY	\$45,011	28.00%	5.80	19.70%	38.00%
PERSON COUNTY	\$50,269	21.90%	4.70	15.30%	46.00%
PITT COUNTY	\$46,229	29.60%	4.90	30.90%	42.00%
POLK COUNTY	\$45,587	21.30%	4.20	31.90%	30.00%
RANDOLPH COUNTY	\$44,207	23.40%	4.40	15.30%	36.00%
RICHMOND COUNTY	\$36,401	37.10%	6.10	14.30%	52.00%
ROBESON COUNTY	\$33,714	44.40%	6.60	12.80%	52.00%
ROCKINGHAM COUNTY	\$46,247	23.90%	5.20	14.70%	41.00%
ROWAN COUNTY	\$47,541	22.40%	4.70	18.40%	40.00%
RUTHERFORD COUNTY	\$40,758	24.40%	6.20	17.30%	40.00%
SAMPSON COUNTY	\$41,951	31.10%	4.80	12.50%	38.00%
SCOTLAND COUNTY	\$37,947	39.30%	7.80	15.90%	54.00%
STANLY COUNTY	\$49,871	19.60%	4.20	16.50%	36.00%
STOKES COUNTY	\$48,748	20.60%	4.30	13.90%	33.00%
SURRY COUNTY	\$43,023	23.10%	4.30	16.50%	28.00%
SWAIN COUNTY	\$41,407	24.00%	5.10	15.00%	48.00%
TRANSYLVANIA COUNTY	\$47,587	24.30%	4.40	29.90%	38.00%
TYRRELL COUNTY	\$35,223	35.00%	7.60	7.60%	57.00%
UNION COUNTY	\$77,875	11.60%	4.00	34.00%	21.00%
VANCE COUNTY	\$39,847	38.00%	6.30	12.10%	58.00%
WAKE COUNTY	\$77,641	11.60%	3.90	51.00%	27.00%
WARREN COUNTY	\$36,831	33.00%	6.90	15.80%	46.00%
WASHINGTON COUNTY	\$36,171	40.70%	6.80	9.10%	62.00%
WATAUGA COUNTY	\$48,417	16.80%	4.10	41.70%	25.00%
WAYNE COUNTY	\$44,592	31.10%	5.10	19.70%	43.00%
WILKES COUNTY	\$42,453	24.70%	4.30	15.40%	29.00%
WILSON COUNTY	\$44,825	28.70%	7.30	18.80%	46.00%
YADKIN COUNTY	\$46,885	22.00%	4.00	12.00%	33.00%
YANCEY COUNTY	\$41,053	25.50%	4.60	19.70%	28.00%

ECONOMIC DEVELOPMENT INDICATORS

MEDIAN HOUSEHOLD INCOME

Median household income reports the exact middle of the household income distribution in each county in 2017. One-half of all households in each county have an income below the median income and one-half have incomes above it.

CHILD POVERTY

The child poverty rate reflects the percentage of children under age 18 living at or below the poverty level in 2017.

UNEMPLOYMENT RATE

The unemployment rate is the number of unemployed individuals as a percentage of the labor force (the sum of the employed and unemployed individuals) in 2017. Individuals classified as unemployed are those who are without work, available for work, and actively seeking work.

ADULTS WITH BACHELOR'S DEGREE

Adults with Bachelor's Degrees represents the percentage of the population 25 years of age and older who have obtained a bachelor's degree or higher during the five-year average of 2013-2017.

SINGLE PARENT HOUSEHOLDS

Single parent households represent the 2012-2016 five-year average of the percentage of children living in single-parent households out of all children living in family households.

NORTH CAROLINA DATA

Median Household Income: \$52,757
 Percentage of Children Living in Poverty: 21.00%
 Unemployment Rate: 4.50%
 Percentage of Adults with at Least a Bachelor's Degree: 29.90%
 Percentage of Children Living in Single-Parent Households: 36.00%



OVERALL DATA

	TEEN PREGNANCY RATE PER 1,000	NUMBER OF PHYSICIANS PER 10,000	CHILD FATALITY RATE PER 10,000	CHILD FOOD INSECURITY PERCENTAGE	CHILD OBESITY PERCENTAGE	JUVENILE DELINQUENCY RATE PER 1,000	SHORT-TERM SUSPENSION RATE PER 1,000	JUVENILE DETENTION ADMISSION RATE PER 1,000	CHILDREN IN DSS CUSTODY RATE PER 1,000	CHILD ABUSE & NEGLECT RATE PER 1,000	GRADUATION RATE	3RD GRADE READING PROFICIENCY	MATH I PROFICIENCY	ACT COMPOSITE SCORE	PERCENTAGE OF SCHOOLS THAT MET OR EXCEEDED GROWTH	MEDIAN HOUSEHOLD INCOME	PERCENTAGE OF CHILDREN LIVING IN POVERTY	UNEMPLOYMENT RATE	ADULTS WITH AT LEAST A BACHELOR'S DEGREE	CHILDREN LIVING IN SINGLE-PARENT HOUSEHOLDS
ALAMANCE COUNTY	27.90	17.32	4.99	21.40%	17.10%	21.86	138.05	1.94	3.88	8.03	82.40	53.40	60.90	17.50	79.40%	\$47,914	20.60%	4.30	22.90%	39.00%
ALEXANDER COUNTY	34.20	4.16	6.49	22.30%	18.50%	30.85	76.45	1.07	12.73	13.50	86.20	64.30	62.70	19.30	81.80%	\$48,577	16.10%	3.70	13.90%	30.00%
ALLEGHANY COUNTY	47.00	8.90	5.02	24.30%	15.90%	18.60	77.50	4.84	20.58	21.08	86.30	54.70	47.50	17.90	25.00%	\$38,994	34.70%	5.20	18.70%	37.00%
ANSON COUNTY	43.10	5.07	7.67	23.30%	18.20%	12.44	525.92	2.11	4.60	12.85	79.90	46.60	51.10	16.00	90.00%	\$41,266	33.00%	5.30	9.20%	46.00%
ASHE COUNTY	31.50	10.65	4.04	23.20%	15.00%	18.35	66.76	0.56	14.55	16.37	87.80	64.50	53.00	19.20	60.00%	\$40,611	25.10%	4.20	19.50%	35.00%
AVERY COUNTY	24.30	13.28	10.85	20.90%	17.20%	17.76	51.72	1.04	13.74	13.38	95.00	63.40	67.60	17.80	90.00%	\$40,682	27.50%	4.40	20.20%	28.00%
BEAUFORT COUNTY	32.70	9.25	7.20	20.70%	12.70%	26.61	218.79	2.42	16.15	19.75	80.60	54.50	53.30	17.60	50.00%	\$43,497	31.10%	5.10	19.60%	35.00%
BERTIE COUNTY	41.00	4.53	5.29	25.20%	11.20%	18.59	209.68	0.72	3.18	7.15	84.80	48.30	32.80	16.00	75.00%	\$33,022	39.20%	6.10	12.30%	44.00%
BLADEN COUNTY	39.80	7.27	9.73	27.50%	20.70%	6.48	159.94	0.19	9.45	10.98	87.50	54.10	53.80	16.00	77.00%	\$38,059	28.40%	6.00	14.50%	55.00%
BRUNSWICK COUNTY	37.80	11.01	3.60	23.60%	17.00%	22.59	139.74	1.31	9.59	13.92	83.80	55.70	62.90	18.20	66.60%	\$56,227	21.50%	5.70	28.00%	37.00%
BUNCOMBE COUNTY	26.20	43.02	3.01	19.60%	13.80%	13.11	128.39	0.44	10.20	15.15	88.30	61.00	67.10	19.10	66.00%	\$50,271	17.60%	3.50	38.50%	32.00%
BURKE COUNTY	37.20	23.93	10.35	23.50%	16.40%	21.74	90.89	1.92	16.29	19.07	86.30	53.60	68.90	18.70	92.00%	\$42,179	22.10%	4.30	16.70%	42.00%
CABARRUS COUNTY	26.50	22.48	3.90	17.80%	17.00%	9.24	115.40	0.55	3.06	4.80	89.40	57.70	63.00	19.00	64.50%	\$62,167	13.60%	4.20	30.00%	26.00%
CALDWELL COUNTY	39.30	9.48	6.58	21.50%	18.00%	15.54	75.35	1.99	16.93	12.92	89.50	61.80	67.20	18.60	79.20%	\$44,798	22.10%	4.50	14.80%	32.00%
CAMDEN COUNTY	16.20	0.00	4.75	20.10%	12.90%	8.36	38.15	0.00	4.75	4.27	85.40	77.20	58.40	19.50	60.00%	\$64,086	10.70%	4.50	18.10%	31.00%
CARTERET COUNTY	23.80	15.24	4.10	20.70%	17.30%	11.51	114.34	1.28	10.25	12.71	86.20	66.80	78.20	21.10	75.10%	\$53,192	20.90%	4.50	26.70%	33.00%
CASWELL COUNTY	28.20	2.53	16.56	24.10%	12.10%	18.13	231.47	1.63	7.34	8.99	76.10	51.90	37.20	17.00	0.00%	\$44,998	28.80%	4.90	13.70%	36.00%
CATAWBA COUNTY	29.90	25.49	4.88	20.90%	30.10%	16.02	89.37	1.76	5.45	9.41	90.80	55.90	62.90	18.30	85.70%	\$53,348	18.70%	4.20	21.50%	31.00%
CHATHAM COUNTY	22.50	5.48	4.29	18.70%	19.90%	9.94	64.03	0.29	3.86	8.00	87.70	59.80	61.50	18.80	82.40%	\$63,373	16.00%	3.90	40.10%	32.00%
CHEROKEE COUNTY	34.80	10.95	12.08	24.10%	14.90%	17.30	40.76	1.14	21.34	22.34	92.50	67.90	59.80	18.00	76.90%	\$38,283	28.80%	5.10	19.20%	37.00%
CHOWAN COUNTY	37.50	20.99	0.00	25.80%	26.50%	31.85	169.06	0.48	0.69	1.37	84.10	55.20	40.70	16.70	66.70%	\$43,182	29.20%	5.50	19.00%	51.00%
CLAY COUNTY	34.50	5.22	10.06	22.60%	19.30%	10.44	15.30	0.00	17.10	26.16	89.30	61.50	55.80	18.60	66.70%	\$43,684	27.40%	5.00	23.10%	30.00%
CLEVELAND COUNTY	37.60	16.84	7.10	23.60%	13.90%	34.85	229.30	2.29	14.52	19.58	89.70	58.90	55.70	18.00	74.10%	\$39,911	26.60%	4.70	16.50%	43.00%
COLUMBUS COUNTY	49.40	13.00	9.10	24.60%	19.40%	14.98	156.69	1.97	10.26	8.77	85.70	46.60	56.10	16.40	78.70%	\$37,639	34.70%	5.60	12.50%	45.00%
CRAVEN COUNTY	42.30	25.84	6.46	21.60%	16.60%	23.60	210.32	1.42	4.33	7.83	85.10	60.50	63.90	18.40	64.00%	\$51,390	26.40%	4.70	24.30%	36.00%
CUMBERLAND COUNTY	42.40	18.20	7.30	22.10%	11.50%	30.04	196.66	3.91	14.02	14.21	82.10	57.30	60.20	17.70	82.60%	\$44,065	25.10%	5.80	24.30%	42.00%
CURRITUCK COUNTY	21.60	3.76	7.28	18.70%	15.20%	17.23	93.22	0.50	5.82	9.82	90.90	61.90	65.00	18.80	70.00%	\$62,397	15.00%	4.50	22.90%	25.00%
DARE COUNTY	27.10	19.30	1.45	18.90%	17.40%	34.13	56.93	0.42	1.88	8.68	94.50	65.90	72.40	19.80	100.00%	\$57,316	16.30%	6.00	29.80%	30.00%
DAVIDSON COUNTY	31.80	6.64	4.16	21.20%	17.30%	21.75	93.99	1.73	6.75	10.55	86.20	58.50	62.60	17.90	80.90%	\$47,595	21.50%	4.30	18.10%	33.00%
DAVIE COUNTY	26.00	8.19	3.49	20.50%	18.50%	21.62	57.09	1.10	9.78	16.65	87.30	59.60	64.60	19.50	81.90%	\$58,147	17.10%	4.00	23.00%	28.00%
DUPLIN COUNTY	41.30	6.39	5.58	24.80%	22.00%	16.71	175.64	1.00	5.16	10.46	81.30	39.70	55.00	17.20	81.30%	\$39,470	30.50%	4.90	10.80%	42.00%
DURHAM COUNTY	31.10	75.38	4.58	19.60%	14.90%	12.87	167.75	2.02	5.37	4.05	81.40	44.60	46.70	17.30	78.00%	\$60,045	24.30%	4.10	47.30%	43.00%
EDGECOMBE COUNTY	52.20	9.27	10.57	27.90%	14.70%	28.63	299.29	2.96	7.07	15.52	80.70	32.40	45.20	15.70	42.80%	\$35,130	38.50%	7.80	11.60%	59.00%
FORSYTH COUNTY	28.20	54.88	6.99	21.70%	16.80%	22.18	168.12	2.11	3.26	6.57	86.50	52.80	62.60	18.70	76.30%	\$50,803	25.10%	4.40	33.80%	38.00%
FRANKLIN COUNTY	28.40	1.20	7.48	20.00%	37.40%	11.35	185.97	0.39	9.52	13.54	85.30	50.10	63.10	18.30	81.30%	\$53,076	23.90%	4.70	21.00%	33.00%
GASTON COUNTY	33.50	18.03	5.25	21.90%	13.70%	17.11	236.61	4.65	9.22	7.79	88.30	51.00	62.70	18.10	83.70%	\$50,016	21.70%	4.60	20.50%	39.00%
GATES COUNTY	28.90	0.00	16.90	20.50%	19.80%	11.76	117.61	0.00	0.42	1.27	89.30	48.90	57.40	17.60	80.00%	\$50,164	22.60%	4.50	15.70%	28.00%
GRAHAM COUNTY	41.30	4.53	5.54	24.60%	19.70%	13.30	47.05	0.00	20.50	22.16	93.20	61.80	63.30	18.10	33.30%	\$37,748	28.00%	6.80	14.20%	27.00%
GRANVILLE COUNTY	30.90	21.01	4.17	19.80%	16.10%	6.58	139.56	0.71	4.84	10.85	84.30	49.90	56.20	17.10	94.40%	\$53,142	17.00%	3.90	21.00%	38.00%
GREENE COUNTY	42.60	4.65	4.41	22.90%	19.10%	17.74	118.41	0.00	7.93	3.08	94.50	44.10	45.70	16.20	80.00%	\$40,131	43.70%	4.50	9.80%	46.00%
GUILFORD COUNTY	25.70	24.56	7.74	21.00%	15.70%	23.69	96.76	2.50	9.08	4.72	89.80	53.40	66.90	18.90	84.80%	\$52,284	19.70%	4.80	34.90%	41.00%
HALIFAX COUNTY	48.40	14.09	7.20	26.80%	19.30%	33.67	331.17	1.40	3.15	15.49	80.40	41.00	36.20	16.00	80.50%	\$34,027	40.20%	7.40	14.00%	58.00%
HARNETT COUNTY	30.30	7.18	8.11	21.10%	15.00%	17.79	152.13	0.54	4.42	7.57	81.50	51.10	46.80	17.80	83.30%	\$51,406	22.90%	5.10	20.30%	32.00%
HAYWOOD COUNTY	31.60	17.18	0.88	23.10%	15.50%	15.15	83.02	0.77	11.97	28.00	85.80	63.80	68.20	19.20	85.70%	\$47,872	22.50%	4.10	24.30%	36.00%
HENDERSON COUNTY	30.80	23.33	3.62	19.00%	14.70%	15.09	71.02	0.32	9.45	10.99	92.90	64.70	75.40	19.70	90.90%	\$51,314	17.50%	3.90	31.20%	30.00%
HERTFORD COUNTY	31.00	20.04	6.37	25.00%	18.00%	17.11	296.28	0.88	0.85	2.97	82.40	41.10	43.50	15.60	57.20%	\$38,786	36.70%	5.80	15.30%	53.00%
HOKE COUNTY	36.90	4.87	6.65	23.10%	13.00%	14.91	164.30	0.56	5.38	6.89	78.80	49.10	75.20	16.60	76.90%	\$50,777	23.20%	5.80	18.30%	36.00%
HYDE COUNTY	*	1.77	10.74	25.30%	17.50%	3.43	213.79	0.00	7.52	2.15	94.60	63.00	53.80	16.70	66.70%	\$41,214	30.80%	8.50	7.20%	42.00%
IREDELL COUNTY	27.10	19.26	7.63	19.40%	15.60%	26.85	116.43	1.16	7.86	15.84	88.70	62.10	67.70	19.30	73.00%	\$56,559	16.40%	4.30	26.90%	31.00%
JACKSON COUNTY	21.00	21.11	4.01	24.60%	16.20%	24.87	47.56	0.00	11.36	13.50	86.70	48.10	67.40	19.20	87.50%	\$46,113	22.50%	4.80	30.50%	42.00%

	TEEN PREGNANCY RATE PER 1,000	NUMBER OF PHYSICIANS PER 10,000	CHILD FATALITY RATE PER 10,000	CHILD FOOD INSECURITY PERCENTAGE	CHILD OBESITY PERCENTAGE	JUVENILE DELINQUENCY RATE PER 1,000	SHORT-TERM SUSPENSION RATE PER 1,000	JUVENILE DETENTION ADMISSION RATE PER 1,000	CHILDREN IN DSS CUSTODY RATE PER 1,000	CHILD ABUSE & NEGLECT RATE PER 1,000	GRADUATION RATE	3RD GRADE READING PROFICIENCY	MATH 1 PROFICIENCY	ACT COMPOSITE SCORE	PERCENTAGE OF SCHOOLS THAT MET OR EXCEEDED GROWTH	MEDIAN HOUSEHOLD INCOME	PERCENTAGE OF CHILDREN LIVING IN POVERTY	UNEMPLOYMENT RATE	ADULTS WITH AT LEAST A BACHELOR'S DEGREE	CHILDREN LIVING IN SINGLE-PARENT HOUSEHOLDS
JOHNSTON COUNTY	29.90	7.70	4.71	19.40%	17.70%	12.37	100.73	0.32	3.87	6.98	92.20	57.70	69.60	18.50	63.60%	\$58,647	21.40%	4.20	21.70%	32.00%
JONES COUNTY	31.20	13.52	0.00	27.20%	19.20%	36.01	88.85	2.72	9.51	6.01	95.00	74.70	63.00	17.10	100.00%	\$41,523	32.60%	4.50	14.20%	41.00%
LEE COUNTY	42.20	14.83	10.73	21.20%	17.30%	37.03	191.40	1.40	5.50	4.36	90.10	59.80	47.50	17.90	61.60%	\$53,297	22.90%	5.20	21.20%	36.00%
LENOIR COUNTY	42.00	17.40	6.30	24.60%	13.40%	22.57	254.80	3.49	5.59	12.36	81.70	48.00	41.00	16.10	68.80%	\$39,411	37.70%	4.60	13.50%	41.00%
LINCOLN COUNTY	26.60	9.37	4.63	20.40%	17.90%	27.19	114.29	1.51	8.50	11.22	90.80	66.50	67.80	18.50	90.50%	\$57,042	15.10%	4.00	20.20%	25.00%
MACON COUNTY	36.80	21.18	6.10	24.20%	6.80%	21.72	37.88	0.22	6.71	14.80	91.70	62.50	60.60	18.70	70.00%	\$42,456	26.50%	4.70	22.20%	34.00%
MADISON COUNTY	23.80	7.64	9.98	21.80%	19.60%	17.47	65.36	0.00	29.18	16.96	88.00	79.10	55.60	18.80	66.70%	\$41,891	24.30%	4.30	25.90%	34.00%
MARTIN COUNTY	38.80	10.21	8.45	23.50%	20.80%	47.33	289.62	4.33	13.72	10.77	82.10	40.60	51.00	18.00	66.60%	\$37,225	30.70%	5.80	15.80%	39.00%
MCDOWELL COUNTY	34.70	8.75	5.40	23.50%	11.30%	17.86	78.57	2.29	21.40	25.50	85.30	57.80	65.90	17.60	91.70%	\$42,853	25.90%	4.20	15.90%	35.00%
MECKLENBURG COUNTY	29.90	31.37	4.26	18.20%	14.50%	24.56	145.48	2.57	3.09	7.15	89.40	58.40	68.90	18.70	71.20%	\$65,750	16.80%	4.30	44.10%	36.00%
MITCHELL COUNTY	32.10	17.06	7.24	23.50%	14.40%	11.03	35.54	0.51	41.97	27.13	87.60	51.50	67.40	18.90	66.60%	\$40,589	25.60%	5.30	18.10%	29.00%
MONTGOMERY COUNTY	50.80	2.87	4.88	22.70%	20.10%	26.60	199.12	0.00	8.46	10.74	89.80	49.20	62.50	16.90	88.90%	\$43,695	27.30%	4.60	14.00%	32.00%
MOORE COUNTY	27.30	34.43	6.44	21.00%	15.80%	13.49	93.18	0.29	3.27	5.01	91.00	66.50	65.30	19.00	80.00%	\$62,781	14.80%	4.50	36.00%	32.00%
NASH COUNTY	37.50	18.23	9.32	21.90%	19.20%	25.24	275.60	2.37	3.04	8.68	84.30	40.50	50.70	16.70	54.10%	\$47,597	23.90%	6.10	20.30%	42.00%
NEW HANOVER COUNTY	20.20	32.96	5.58	20.30%	14.50%	14.59	143.55	1.36	14.98	19.03	83.40	63.70	67.90	20.00	73.70%	\$53,692	21.00%	4.20	38.90%	38.00%
NORTHAMPTON COUNTY	50.10	1.93	5.18	30.20%	18.90%	23.55	506.36	1.41	3.89	2.07	76.20	30.30	21.90	14.90	71.50%	\$36,190	40.10%	6.30	12.80%	71.00%
ONSLOW COUNTY	59.30	9.15	4.81	20.40%	11.00%	25.67	95.47	2.86	7.44	10.76	89.50	59.80	58.60	18.40	85.30%	\$49,634	18.30%	5.10	20.20%	26.00%
ORANGE COUNTY	8.00	118.78	2.65	16.10%	14.10%	6.52	34.42	0.36	2.35	11.81	89.40	67.20	78.80	22.60	93.40%	\$69,422	11.20%	3.80	57.60%	25.00%
PAMLICO COUNTY	30.10	6.78	9.83	23.00%	9.80%	15.09	210.23	0.65	8.35	12.78	94.10	47.70	80.00	18.30	100.00%	\$48,410	30.50%	4.80	19.40%	39.00%
PASQUOTANK COUNTY	29.30	26.36	2.18	22.50%	17.00%	28.44	302.71	1.78	1.53	6.00	86.30	47.90	39.80	16.50	63.60%	\$46,709	30.70%	5.60	20.40%	43.00%
PENDER COUNTY	28.70	3.77	10.26	21.40%	17.90%	32.12	95.13	2.78	8.37	13.98	89.30	64.10	65.40	19.20	87.60%	\$52,187	17.50%	4.70	25.60%	32.00%
PERQUIMANS COUNTY	39.20	2.21	0.00	23.70%	17.90%	28.99	118.08	1.64	3.14	5.10	90.80	58.90	65.00	17.40	66.70%	\$45,011	28.00%	5.80	19.70%	38.00%
PERSON COUNTY	46.40	9.03	12.02	22.30%	20.00%	25.50	164.04	2.70	12.98	18.99	78.80	57.50	57.50	17.50	90.90%	\$50,269	21.90%	4.70	15.30%	46.00%
PITT COUNTY	23.30	49.43	8.48	21.90%	16.40%	29.87	338.87	2.80	6.42	9.43	86.20	49.70	57.70	17.90	62.90%	\$46,229	29.60%	4.90	30.90%	42.00%
POLK COUNTY	30.20	13.24	2.90	22.20%	11.50%	14.75	58.96	1.54	15.10	10.46	88.50	70.10	72.40	20.30	85.70%	\$45,587	21.30%	4.20	31.90%	30.00%
RANDOLPH COUNTY	35.40	7.33	8.12	21.60%	17.90%	17.16	53.17	0.48	5.56	6.81	89.90	55.60	62.60	17.80	84.70%	\$44,207	23.40%	4.40	15.30%	36.00%
RICHMOND COUNTY	47.70	8.91	9.69	27.00%	15.60%	36.33	281.90	3.58	3.97	7.55	76.70	50.70	80.20	16.70	92.80%	\$36,401	37.10%	6.10	14.30%	52.00%
ROBESON COUNTY	49.00	12.50	11.82	28.70%	17.40%	20.00	342.43	1.28	12.94	26.62	87.00	38.60	38.80	16.20	65.80%	\$33,714	44.40%	6.60	12.80%	52.00%
ROCKINGHAM COUNTY	34.80	10.68	4.32	23.10%	17.70%	16.69	126.95	1.87	18.51	20.08	85.40	51.00	60.40	17.70	87.50%	\$46,247	23.90%	5.20	14.70%	41.00%
ROWAN COUNTY	38.00	12.40	5.36	22.60%	14.40%	9.57	192.53	0.58	2.90	11.47	83.00	51.00	44.00	17.70	70.60%	\$47,541	22.40%	4.70	18.40%	40.00%
RUTHERFORD COUNTY	36.30	9.44	5.01	24.20%	16.50%	17.09	150.11	1.11	15.40	16.40	85.00	62.70	59.10	18.10	64.70%	\$40,758	24.40%	6.20	17.30%	40.00%
SAMPSON COUNTY	52.30	9.82	4.46	23.30%	18.10%	18.06	138.54	2.86	11.22	14.66	81.80	58.70	71.40	17.40	67.80%	\$41,951	31.10%	4.80	12.50%	38.00%
SCOTLAND COUNTY	54.10	17.93	7.19	30.60%	17.50%	19.30	202.71	2.28	8.75	20.86	82.80	43.50	60.90	16.50	63.60%	\$37,947	39.30%	7.80	15.90%	54.00%
STANLY COUNTY	32.70	11.85	6.04	21.80%	16.40%	18.31	188.22	1.21	2.79	16.84	87.80	59.50	63.20	17.50	68.40%	\$49,871	19.60%	4.20	16.50%	36.00%
STOKES COUNTY	22.70	5.14	0.00	21.30%	13.90%	19.44	76.38	0.78	21.10	15.91	87.00	64.60	60.40	18.90	72.30%	\$48,748	20.60%	4.30	13.90%	33.00%
SURRY COUNTY	32.80	17.30	5.20	21.20%	21.40%	26.38	62.58	0.82	7.86	13.13	90.70	62.70	74.70	18.50	92.20%	\$43,023	23.10%	4.30	16.50%	28.00%
SWAIN COUNTY	65.10	22.00	8.78	27.60%	12.50%	10.54	57.57	0.00	26.65	12.59	83.10	62.60	52.70	18.60	50.00%	\$41,407	24.00%	5.10	15.00%	48.00%
TRANSYLVANIA COUNTY	25.90	16.25	7.14	23.40%	13.30%	10.06	53.65	0.50	13.21	11.60	86.40	65.70	71.00	19.20	50.00%	\$47,587	24.30%	4.40	29.90%	38.00%
TYRRELL COUNTY	*	0.00	0.00	27.90%	12.50%	36.53	120.81	0.00	12.42	8.70	92.30	52.10	41.70	17.30	100.00%	\$35,223	35.00%	7.60	7.60%	57.00%
UNION COUNTY	18.00	9.03	3.97	16.50%	18.40%	24.39	92.77	0.77	2.63	3.78	92.50	70.40	78.80	20.70	84.00%	\$77,875	11.60%	4.00	34.00%	21.00%
VANCE COUNTY	51.40	16.05	9.37	25.80%	16.50%	17.48	402.02	3.38	4.68	13.30	81.90	41.60	35.70	15.10	37.60%	\$39,847	38.00%	6.30	12.10%	58.00%
WAKE COUNTY	19.40	24.39	4.02	16.50%	15.30%	10.21	74.90	0.90	3.55	5.84	88.50	67.40	74.40	20.20	63.10%	\$77,641	11.60%	3.90	51.00%	27.00%
WARREN COUNTY	37.70	1.99	0.00	25.10%	20.70%	12.29	357.95	1.47	4.56	6.71	79.30	55.20	35.10	16.80	75.00%	\$36,831	33.00%	6.90	15.80%	46.00%
WASHINGTON COUNTY	55.60	3.24	15.16	27.40%	16.10%	14.79	343.41	3.12	10.61	17.05	80.40	39.30	38.20	14.20	40.00%	\$36,171	40.70%	6.80	9.10%	62.00%
WATAUGA COUNTY	6.50	22.25	11.67	21.50%	20.20%	14.38	11.13	0.41	12.25	9.19	91.20	68.40	70.00	21.10	90.00%	\$48,417	16.80%	4.10	41.70%	25.00%
WAYNE COUNTY	43.30	14.73	4.93	24.10%	15.90%	14.60	175.37	1.56	6.51	8.88	84.30	47.50	47.60	17.00	58.60%	\$44,592	31.10%	5.10	19.70%	43.00%
WILKES COUNTY	42.00	10.21	4.22	23.00%	20.20%	30.94	66.45	3.32	23.07	22.02	88.90	53.90	62.50	17.60	77.30%	\$42,453	24.70%	4.30	15.40%	29.00%
WILSON COUNTY	42.40	15.60	8.53	26.80%	16.40%	24.82	409.85	1.35	1.65	4.48	75.90	50.50	57.20	18.10	64.00%	\$44,825	28.70%	7.30	18.80%	46.00%
YADKIN COUNTY	34.60	4.51	2.52	22.20%	18.50%	39.55	56.57	2.32	9.33	8.82	88.60	60.40	65.10	17.90	84.60%	\$46,885	22.00%	4.00	12.00%	33.00%
YANCEY COUNTY	38.10	7.14	0.00	23.40%	16.90%	21.87	291.47	0.43	14.60	25.32	91.00	64.50	72.10	19.00	100.00%	\$41,053	25.50%	4.60	19.70%	28.00%



OVERALL RANKINGS

	OVERALL RANKING	TEEN PREGNANCY RANKING	NUMBER OF PHYSICIANS RANKING	CHILD FATALITY RANKING	CHILD FOOD INSECURITY RANKING	CHILD OBESITY RANKING	JUVENILE DELINQUENCY RANKING	SHORT-TERM SUSPENSION RANKING	JUVENILE DETENTION ADMISSION RANKING	CHILDREN IN DSS CUSTODY RANKING	CHILD ABUSE & NEGLECT RANKING	GRADUATION RANKING	3RD GRADE READING PROFICIENCY RANKING	MATH I PROFICIENCY RANKING	ACT COMPOSITE RANKING	MET OR EXCEEDED GROWTH SCORE	MEDIAN HOUSEHOLD INCOME RANKING	CHILD POVERTY RANKING	UNEMPLOYMENT RANKING	ADULTS WITH BACHELOR'S DEGREE RANKING	SINGLE-PARENT HOUSEHOLDS RANKING	AVERAGE OF ALL RANKINGS
ORANGE COUNTY	1	2	1	12	1	20	3	3	18	7	55	29	9	3	1	7	3	2	3	1	2	9.10
WAKE COUNTY	2	5	13	21	2	32	10	24	42	19	16	38	8	9	6	84	2	3	4	2	8	17.40
UNION COUNTY	3	4	63	19	2	74	71	34	37	8	7	9	4	3	4	29	1	3	8	11	1	19.60
HENDERSON COUNTY	4	37	15	17	9	25	31	23	16	59	51	8	15	6	9	12	27	17	4	14	17	20.60
MOORE COUNTY	5	23	6	56	26	37	23	35	14	18	14	15	11	31	20	40	7	6	36	9	25	22.60
DARE COUNTY	6	21	24	9	8	60	93	14	21	6	32	4	13	10	8	1	13	11	83	19	17	23.35
CABARRUS COUNTY	7	19	16	18	4	52	6	44	30	12	13	29	48	40	20	78	9	5	15	17	6	24.05
WATAUGA COUNTY	8	1	16	94	35	91	24	1	20	72	39	14	6	15	2	15	38	13	12	5	2	25.75
CHATHAM COUNTY	9	9	78	28	6	88	8	19	14	20	30	45	37	51	26	33	6	9	4	6	25	27.10
CAMDEN COUNTY	10	3	100	35	16	12	5	6	1	30	9	63	2	61	10	87	5	1	36	57	22	28.05
BUNCOMBE COUNTY	11	18	5	14	12	17	21	51	23	65	73	40	34	27	19	75	30	19	1	8	25	28.85
POLK COUNTY	12	35	45	13	46	6	27	17	62	85	43	38	5	10	5	22	51	28	15	13	17	29.15
MECKLENBURG COUNTY	13	31	8	27	5	23	72	57	84	13	24	29	46	17	29	60	4	13	23	4	43	30.60
JOHNSTON COUNTY	14	31	69	34	10	64	18	41	16	21	23	12	48	16	36	81	11	29	15	33	25	31.65
CURRITUCK COUNTY	15	8	89	68	6	31	42	36	26	39	42	17	30	33	26	62	8	7	36	30	2	31.90
CARTERET COUNTY	16	12	39	23	22	57	15	43	51	66	58	57	10	5	2	52	20	26	36	22	33	32.45
LINCOLN COUNTY	17	20	59	33	18	66	82	42	61	54	52	18	11	21	36	14	14	8	8	42	2	33.05
CATAWBA COUNTY	18	31	11	37	24	99	35	32	67	35	40	18	52	42	41	22	18	21	15	34	22	34.80
DAVIE COUNTY	19	17	68	15	20	75	59	15	46	64	80	48	40	35	10	34	12	16	8	29	10	35.05
IREDELL COUNTY	20	21	25	71	10	34	81	45	49	48	76	36	29	22	12	57	15	12	23	21	22	35.45
NEW HANOVER COUNTY	20	6	7	51	17	23	25	56	55	84	85	75	22	20	7	56	17	27	15	7	54	35.45
GRANVILLE COUNTY	22	38	21	25	14	40	4	54	35	31	49	70	75	66	75	6	21	15	4	36	54	36.65
HAYWOOD COUNTY	23	43	33	8	57	33	33	30	37	71	100	61	21	19	14	22	41	38	12	25	43	37.05
TRANSYLVANIA COUNTY	24	16	36	63	63	14	9	12	26	77	54	53	14	14	14	92	44	50	32	18	54	37.75
GUILFORD COUNTY	25	15	12	73	26	36	70	40	83	56	12	24	62	28	23	26	23	23	55	10	66	38.15
SURRY COUNTY	26	48	32	44	31	96	78	18	40	49	62	21	25	8	36	9	63	43	23	62	10	39.90
JACKSON COUNTY	27	7	20	20	78	42	74	9	1	70	65	51	81	24	14	20	50	38	55	16	70	40.25
AVERY COUNTY	28	14	44	93	24	56	47	10	44	79	64	1	23	23	57	15	76	66	32	42	10	41.00
MACON COUNTY	29	58	19	53	75	1	60	5	13	42	72	13	28	54	29	62	65	62	48	32	38	41.45
STOKES COUNTY	30	10	80	1	32	18	57	26	39	94	77	49	16	55	23	58	36	24	23	83	33	41.70
DURHAM COUNTY	31	40	2	32	12	27	20	64	74	33	8	87	88	84	72	46	10	50	12	3	77	42.05
FORSYTH COUNTY	32	25	3	61	39	50	65	65	75	17	19	52	64	46	29	51	28	55	32	12	54	42.10
GATES COUNTY	33	29	100	100	20	87	16	46	1	1	1	32	79	64	63	40	32	40	36	69	10	43.30
ONSLOW COUNTY	34	97	62	36	18	3	77	39	89	46	47	27	37	60	39	25	35	20	63	42	6	43.40
PENDER COUNTY	35	28	88	88	33	66	91	38	87	52	69	32	20	30	14	19	24	17	48	24	25	44.65
RANDOLPH COUNTY	36	56	71	75	37	66	41	11	24	37	21	23	54	46	57	27	57	45	32	71	43	44.70
ALAMANCE COUNTY	37	24	31	40	33	55	63	52	71	22	31	79	62	52	67	43	40	24	23	30	60	45.10
YANCEY COUNTY	38	67	74	1	63	51	64	88	22	83	95	15	17	12	20	1	74	58	44	45	10	45.20
DAVIDSON COUNTY	39	44	76	24	29	57	62	37	66	43	45	57	45	46	52	38	43	30	23	57	33	45.35
PAMLICO COUNTY	40	34	75	85	55	2	31	77	34	51	59	6	84	2	41	1	39	75	55	50	60	45.80
GASTON COUNTY	41	49	28	45	42	16	39	83	99	57	28	40	69	44	45	30	33	32	44	38	60	46.05
STANLY COUNTY	42	46	49	52	40	43	52	70	50	9	81	43	41	38	67	65	34	22	15	62	43	46.10
ALEXANDER COUNTY	43	50	87	58	48	75	88	27	45	74	65	57	19	44	12	35	37	10	2	83	17	46.65
ASHE COUNTY	44	42	53	22	60	29	53	22	31	82	78	43	17	75	14	87	77	55	15	49	40	47.20
HARNETT COUNTY	45	36	73	74	28	29	48	59	29	26	27	86	68	83	57	31	25	41	63	40	25	47.40
MADISON COUNTY	45	12	70	86	40	85	44	20	1	99	82	42	1	70	26	67	69	50	23	23	38	47.40
CRAVEN COUNTY	47	78	10	57	37	49	69	78	59	25	29	67	35	36	39	79	26	61	48	25	43	47.50
YADKIN COUNTY	48	52	86	11	46	75	99	13	80	58	36	37	36	32	52	28	46	34	8	93	33	47.75
CALDWELL COUNTY	49	70	57	59	35	70	34	25	73	89	61	27	31	26	33	44	55	35	36	75	25	48.00
FRANKLIN COUNTY	50	27	97	70	15	100	14	69	19	62	67	65	74	39	41	36	22	46	48	36	33	49.00

- QUARTILE 1 - Counties Ranked 1-25
- QUARTILE 2 - Counties Ranked 26-50
- QUARTILE 3 - Counties Ranked 51-75
- QUARTILE 4 - Counties Ranked 76-100

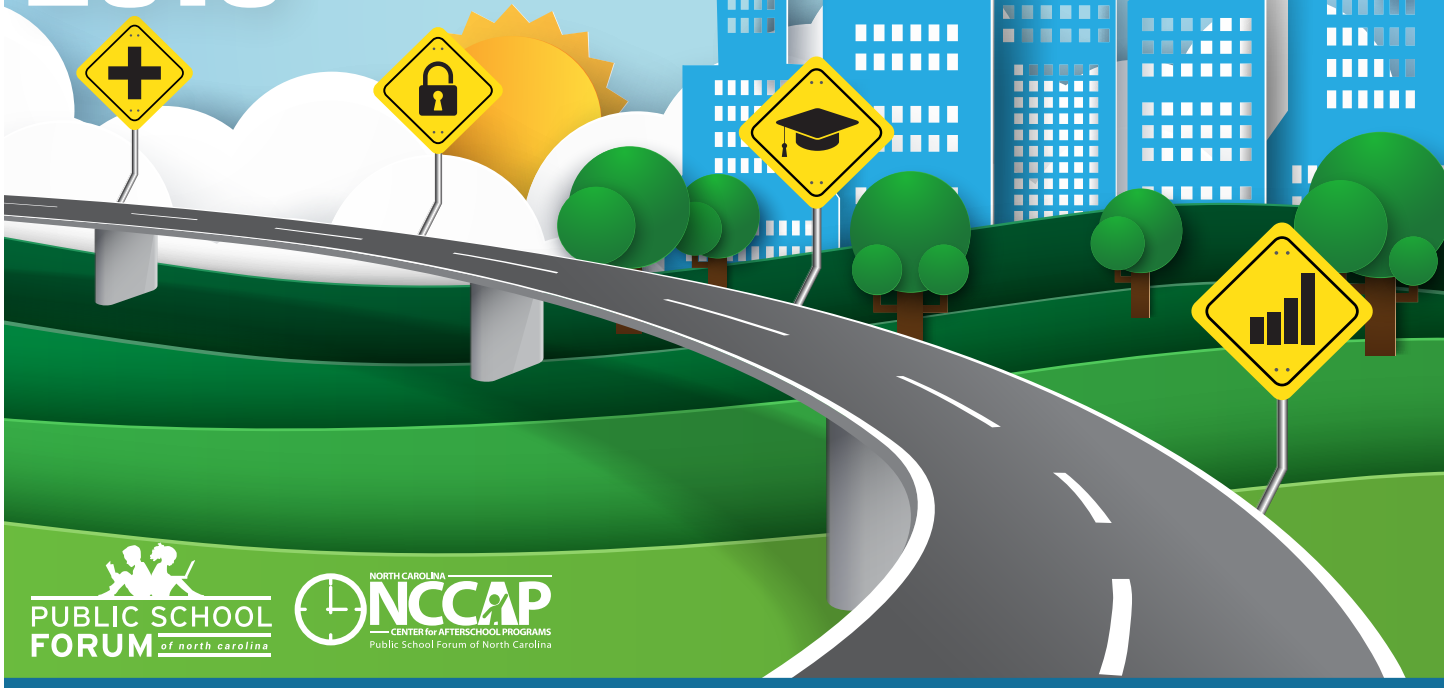
	OVERALL RANKING	TEEN PREGNANCY RANKING	NUMBER OF PHYSICIANS RANKING	CHILD FATALITY RANKING	CHILD FOOD INSECURITY RANKING	CHILD OBESITY RANKING	JUVENILE DELINQUENCY RANKING	SHORT-TERM SUSPENSION RANKING	JUVENILE DETENTION ADMISSION RANKING	CHILDREN IN DSS CUSTODY RANKING	CHILD ABUSE & NEGLECT RANKING	GRADUATION RATE RANKING	3RD GRADE READING PROFICIENCY RANKING	MATH I PROFICIENCY RANKING	ACT COMPOSITE RANKING	MET OR EXCEEDED GROWTH RANKING	MEDIAN HOUSEHOLD INCOME RANKING	CHILD POVERTY RANKING	UNEMPLOYMENT RANKING	ADULTS WITH BACHELOR'S DEGREE RANKING	SINGLE-PARENT HOUSEHOLDS RANKING	AVERAGE OF ALL RANKINGS
MITCHELL COUNTY	51	45	34	67	65	21	13	4	28	100	99	46	67	24	23	72	78	59	72	57	15	49.45
JONES COUNTY	52	41	43	1	92	80	95	31	86	61	18	1	3	40	75	1	70	83	36	79	66	50.10
ROWAN COUNTY	53	66	48	47	51	21	7	72	33	10	53	77	69	87	60	61	45	37	48	55	64	50.55
HOKE COUNTY	54	59	82	60	57	13	29	63	31	34	22	95	78	7	85	49	29	44	78	56	43	50.70
CLAY COUNTY	55	51	79	87	51	82	11	2	1	90	97	32	33	68	33	67	60	65	62	28	17	50.80
BURKE COUNTY	56	60	14	89	65	43	61	33	70	88	86	54	61	17	29	10	67	35	23	61	70	51.80
BRUNSWICK COUNTY	57	65	50	16	69	52	67	55	53	63	68	74	53	42	44	72	16	30	77	20	51	51.85
MCDOWELL COUNTY	58	53	67	48	65	5	49	29	78	96	96	65	47	29	63	11	64	60	15	65	40	52.25
LEE COUNTY	59	77	40	91	29	57	98	71	56	36	10	22	37	81	52	86	19	41	69	35	43	52.50
PERQUIMANS COUNTY	60	69	93	1	71	66	85	47	65	14	15	18	42	33	70	67	52	67	78	45	54	52.60
CHEROKEE COUNTY	61	54	51	97	72	27	43	7	48	95	94	9	7	58	49	49	86	71	63	51	51	54.10
PITT COUNTY	62	11	4	77	42	43	86	93	88	40	41	57	76	62	52	85	49	74	59	15	70	56.20
PASQUOTANK COUNTY	63	30	9	10	50	52	83	91	68	4	17	54	83	92	86	81	47	77	75	39	77	56.25
SWAIN COUNTY	64	98	18	79	95	9	12	16	1	98	57	76	27	76	33	92	71	49	63	74	88	56.60
MONTGOMERY COUNTY	65	91	91	37	53	90	79	74	1	53	46	24	77	49	79	18	59	64	44	81	25	56.75
GRAHAM COUNTY	66	73	84	49	78	86	22	8	1	92	93	7	31	37	45	98	89	67	92	79	8	56.95
ROCKINGHAM COUNTY	67	54	52	29	57	64	36	50	69	91	89	63	69	55	60	20	48	46	69	76	66	58.15
CHOWAN COUNTY	68	61	22	1	87	98	90	66	24	2	2	73	55	91	81	67	62	73	74	52	89	58.50
WILKES COUNTY	69	75	54	26	55	91	89	21	93	97	92	35	60	49	63	47	66	54	23	70	15	58.75
GREENE COUNTY	70	81	83	30	54	79	46	48	1	50	6	4	89	85	89	40	79	99	36	96	83	58.90
HYDE COUNTY	71	*	96	92	86	62	1	79	1	47	4	3	24	72	81	67	73	79	100	100	70	59.84
CUMBERLAND COUNTY	72	79	27	69	45	6	87	73	97	80	70	81	51	57	60	32	58	55	78	25	70	60.00
RUTHERFORD COUNTY	72	57	58	41	75	47	38	58	47	86	79	68	25	59	45	77	75	53	88	60	64	60.00
WAYNE COUNTY	74	83	41	39	72	38	26	67	63	41	37	70	85	80	77	89	56	80	63	45	77	61.45
TYRRELL COUNTY	75	*	100	1	96	9	97	49	1	73	34	11	65	89	72	1	96	88	97	99	95	61.74
CLEVELAND COUNTY	76	63	35	62	69	18	94	81	78	81	87	26	42	69	49	55	80	63	48	62	77	61.95
SAMPSON COUNTY	77	94	56	31	61	72	50	53	89	69	71	84	44	13	70	66	68	80	55	89	54	63.45
NASH COUNTY	78	61	26	81	42	80	75	85	81	11	32	70	95	79	81	91	42	46	85	40	70	63.65
WILSON COUNTY	79	79	38	78	89	43	73	98	54	5	11	100	73	65	45	79	54	70	95	53	83	64.25
BEAUFORT COUNTY	80	46	61	65	22	11	80	80	82	87	88	90	58	74	63	92	61	80	63	48	40	64.55
HERTFORD COUNTY	81	39	23	55	83	70	39	89	41	3	5	79	92	88	97	90	85	89	78	71	92	65.40
PERSON COUNTY	82	84	63	96	48	89	76	62	85	76	84	95	50	63	67	12	31	33	48	71	83	65.80
CASWELL COUNTY	83	25	92	99	72	8	51	82	64	45	38	99	66	95	77	100	53	71	59	85	43	66.20
BLADEN COUNTY	84	71	72	84	94	93	2	61	12	59	50	47	59	72	92	48	87	69	83	77	94	66.30
BERTIE COUNTY	85	72	84	46	85	4	54	76	36	16	24	69	80	99	92	53	100	94	85	91	81	67.05
DUPLIN COUNTY	86	73	77	50	82	97	37	68	43	32	43	88	96	71	74	36	82	75	59	95	70	67.40
WARREN COUNTY	87	64	94	1	84	93	17	96	60	27	20	94	55	98	80	53	92	84	94	67	83	67.80
ALLEGHANY COUNTY	88	85	66	42	77	38	55	28	100	93	91	54	57	81	52	99	84	86	69	54	51	68.10
LENOIR COUNTY	89	75	30	54	78	15	66	84	95	38	56	85	82	90	91	64	83	91	44	86	66	68.65
RICHMOND COUNTY	90	86	65	83	91	34	96	86	96	24	26	97	72	1	81	8	93	90	85	78	90	69.10
COLUMBUS COUNTY	91	89	46	80	78	84	30	60	72	67	35	62	86	67	88	45	90	86	75	89	82	70.55
ANSON COUNTY	92	82	81	72	61	73	19	100	75	28	60	93	86	77	92	15	72	84	72	97	83	71.10
MARTIN COUNTY	93	68	54	76	65	95	100	87	98	78	48	81	94	78	49	72	91	77	78	67	60	75.80
SCOTLAND COUNTY	94	95	29	64	100	62	56	75	77	55	90	78	90	52	86	81	88	95	98	65	93	76.45
HALIFAX COUNTY	95	87	42	65	89	82	92	92	56	15	74	91	93	96	92	39	98	97	96	81	96	78.65
NORTHAMPTON COUNTY	96	90	95	43	99	78	68	99	58	23	3	98	100	100	99	59	94	96	89	87	100	78.90
VANCE COUNTY	97	92	37	82	87	47	45	97	94	29	63	83	91	97	98	97	81	92	89	92	96	79.45
ROBESON COUNTY	98	88	46	95	98	60	58	94	51	75	98	49	98	93	89	76	99	100	91	87	90	81.75
EDGECOMBE COUNTY	99	93	60	90	96	25	84	90	91	44	75	89	99	86	96	95	97	93	98	94	98	84.65
WASHINGTON COUNTY	100	96	90	98	93	40	28	95	92	68	83	91	97	94	100	96	95	98	92	98	99	87.15

HOW THE OVERALL RANKINGS WERE CALCULATED

In order to calculate the overall rankings, we used a method very similar to the method used to calculate the category ranking. As for the category rankings, each county was given a rank of 1-100, either from lowest to highest or highest to lowest, depending on the indicator. For example, teen pregnancy rates were ordered lowest to highest, while physicians per 10,000 population numbers were ordered highest to lowest. Once we had rankings for all the indicators in the category, the indicator rankings were averaged for each county, giving an average of all twenty rankings. The counties were then ranked by this average, providing an overall ranking.

ROADMAP *of* NEED

2019



**PUBLIC SCHOOL
FORUM** *of north carolina*

ABOUT THE PUBLIC SCHOOL FORUM OF NORTH CAROLINA

Since 1986, the Public School Forum of North Carolina has been an indispensable and nonpartisan champion of better schools and the most trusted source in the state for research and analysis on vital education issues. We bring together leaders from business, education and government to study education issues, develop ideas, seek consensus, and ultimately inform and shape education policy. We do that through research, policy work, innovative programs, advocacy, and continuing education for educators and policymakers.

Follow us on Twitter @theNCForum and visit our website at www.ncforum.org.



ABOUT THE NORTH CAROLINA CENTER FOR AFTERSCHOOL PROGRAMS (NC CAP)

The North Carolina Center for Afterschool Programs is a statewide after-school and expanded learning network dedicated to increasing access to high quality after-school and expanded learning programs for all children and youth in North Carolina, helping them to succeed in and out of school. Our work includes research and best practices in the afterschool and expanded learning environment; convening key stakeholders (national, state, and local); advocating for policies to support afterschool and expanded learning; and professional development and technical support for afterschool programs.

Follow us on Twitter @NCAfterschool and visit our website at www.ncafterschool.org.